



YONGSAN RELOCATION PROGRAM (YRP) DESIGN PROCEDURES





CONTENTS

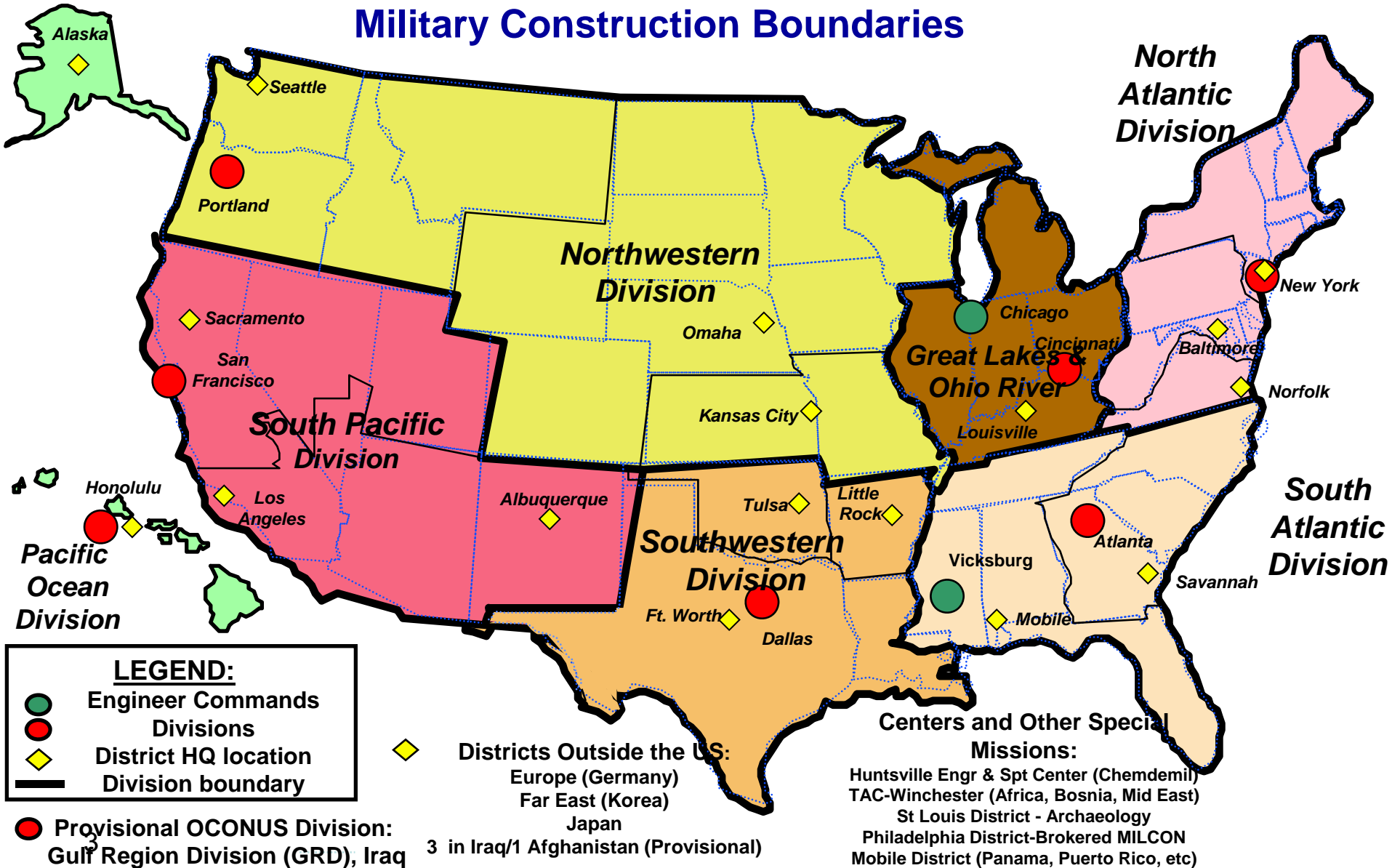
1. USACE Military Construction Boundaries
2. POD Area of Operations
3. WHY FED in Korea
4. USAG Humphreys End State
5. FED Organization
6. Korea Relocation Technical Support Branch Organization Chart
7. Project Assignment
8. Criteria Packages (CPs)
9. Criteria Package Requirements
10. Final Design
11. Design Execution
12. Design Review
13. 60% Design Package Requirements
14. 90% Design Package Requirements
15. 100% Design Package Requirements
16. Applicable Regulations and Codes
17. Criteria Package (CP) Requirements Matrix
18. Drawing Lists



US Army Corps of Engineers

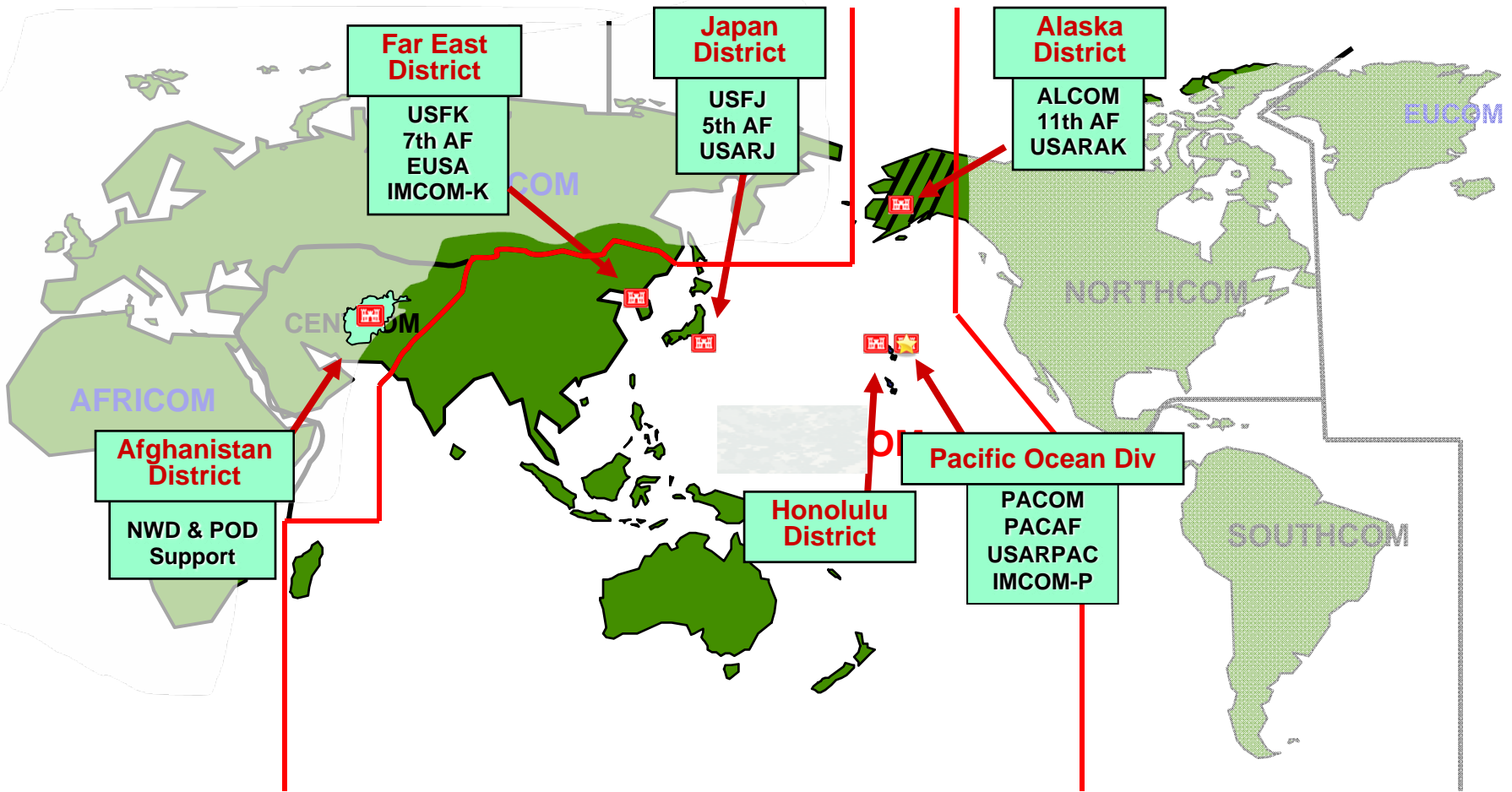


Military Construction Boundaries





POD Area of Operations



92° W



WHY FED in KOREA

1. US Department of Defense (DoD) Directive 4270.5: Military Construction (MILCON)

- **Within the U.S., U.S. Army Corps of Engineers (USACE) will design and construct military facilities for the Army**
- **USACE designated DoD Construction Agent for Korea**



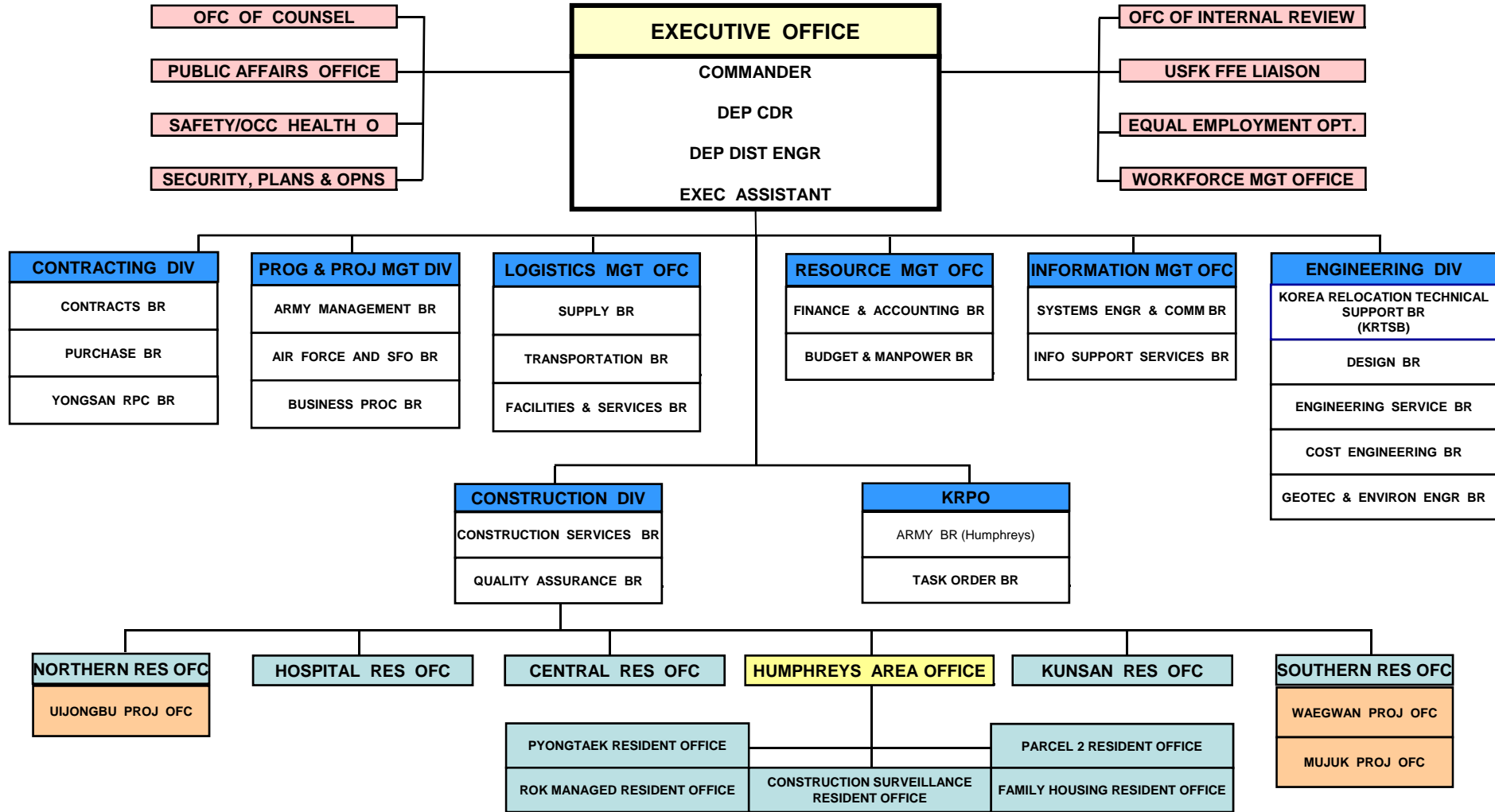
WHY FED in KOREA, continued

2. DoD Directive 4270.34 : Host Nation-Funded Construction Programs in the Pacific Command

- Host nation-funded projects shall be designed and constructed to meet U.S. MILCON program criteria
- DoD Construction Agent shall:
 - Provide complete design and construction criteria to host nations to ensure projects are designed and constructed in accordance with U.S. MILCON program standards and criteria
 - DoD Construction Agent shall provide design and construction surveillance, and inspection services



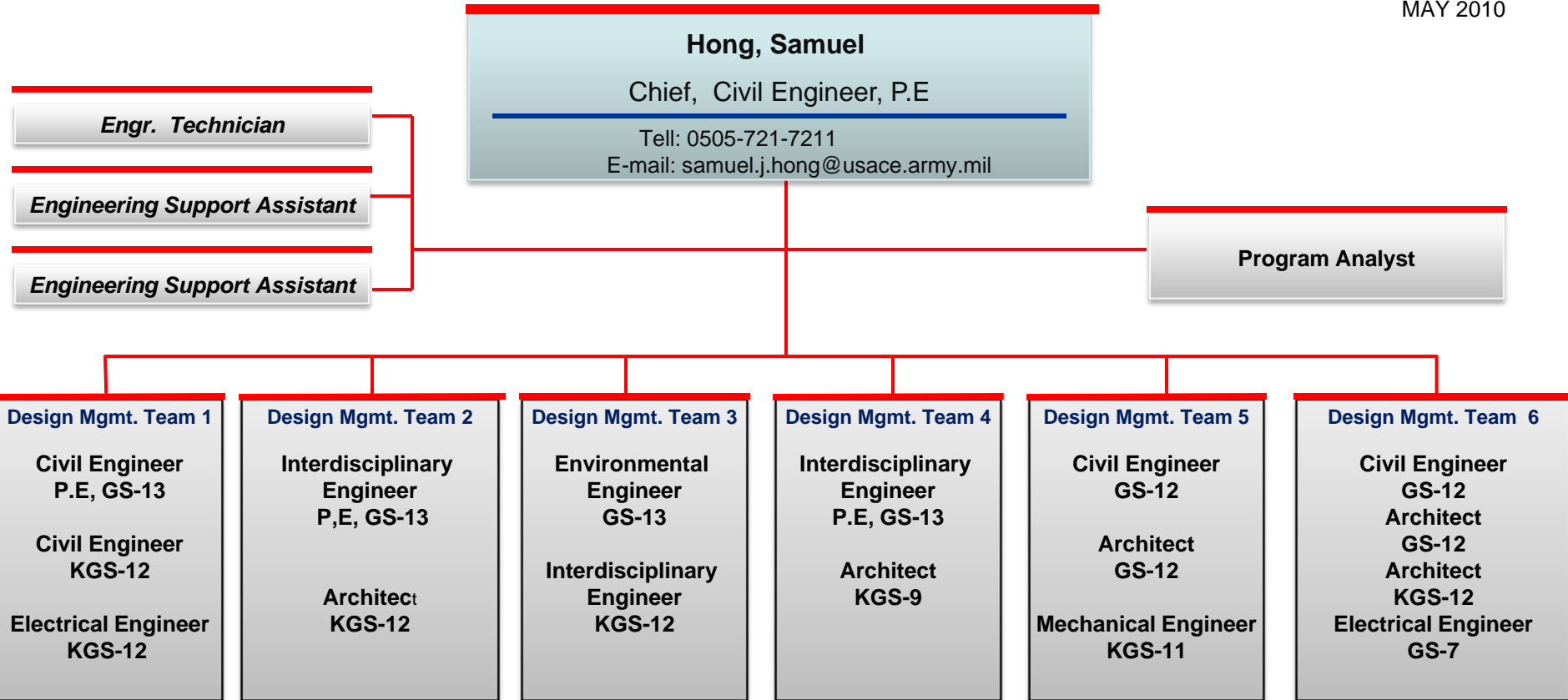
FED ORGANIZATION





Korea Relocation Technical Support Branch Organization Chart

MAY 2010





KRTSB Projects Assignment (73 Projects)

Design Mgmt. Team 1

1. ACCESS CONTROL POINT 1 (YRP)
2. PARCEL 2B LAND & UTILITY DEVELOPMENT (YRP)
3. PARCEL 2B-1 (YRP)
4. PARCEL 2B-2 (YRP)
5. FAMILY HOUSING TOWERS(MILCON)
6. PARCEL 1 SITE WORK (ROKFC)
7. PARCEL K LAND DEVELOPMENT (YRP)
8. PARCEL 2A LAND DEVELOPMENT (ROKFC)
9. ACCESS CONTROL POINT (ROKFC)
10. UPGRADE POWER DISTR & SUBSTATION (ROKFC)
11. ACCESS CONTROL POINT 2 (YRP)
12. CPX GATE (RIK)
13. RAILHEAD (YRP)
14. FUEL OIL FACILITIES (YRP)

Design Mgmt. Team 2

1. HOSPITAL BARRACKS & DFAC (YRP)
2. MEDICAL BRIGADE HQ (YRP)
3. DENTAL CLINIC (YRP)
4. HOSPITAL AND AMBULATORY CARE CENTER (YRP)
5. 18TH MED BDE HQ – FAC# 11102 ONLY (YRP)

Design Mgmt. Team 3

1. TELEVIDEO CENTER (YRP)
2. CONSOLIDATED EUSA MSC HQS (YRP)
3. 3RD MI AIRCRAFT MAINTENANCE HANGAR (ROKFC)
4. MIDTOWN COMMUNITY SUPPORT (YRP)
5. SENIOR LEADERS QUARTERS (BTL)
6. YONGSAN RESIDUAL (YRP)
7. YONGSAN RESIDUAL DEMO (YRP)
8. BCTC & TRANSIENT UPH (YRP)
9. FAMILY HOUSING TOWERS (YRP)
10. HBCT BARRACKS & DFAC (YRP)
11. C4I/INFORMATION SYSTEMS OUTSIDE PLANT CABLING (ROKFC)

Design Mgmt. Team 4

1. CHILD DEVELOPMENT CENTER (YRP)
2. VIP Aircraft Area (YRP)
3. MIDDLE SCHOOL & HIGH SCHOOL (YRP)
4. ELEMENTARY SCHOOL (YRP)
5. HIGH SCHOOL (YRP)
6. CHILD DEVELOPMENT CENTER(ROKFC IN-KIND)
7. ELEMENTARY SCHOOL (ROKFC IN-KIND)
8. EUSA VMFs I (YRP)
9. EUSA VMFs II (YRP)
10. INSTALLATION VMFS (YRP)
11. AFH-GENERAL OFFICER YRP)
12. AFH-O6&COMMANDER (YRP)
13. CONFINEMENT FAC. (RIK)
- * Completed Projects
14. EDUCATION CENTER ACES
15. VMF/COMPANY OPERATIONS (601) (ROKFC)
16. VMF/COMPANY OPERATIONS (603) (ROKFC)
17. VMF/COMPANY OPERATIONS (605) (ROKFC)

Design Mgmt. Team 5

1. 8TH ARMY IMCOM HQ (YRP)
2. KORCOM HQ (YRP)
3. PHASE III FACILITY (YRP)
4. SPARTAN SITES A & B (YRP)
5. TEMP VET CLINIC (JOC)
6. 501MI TRACKER RELOCATION (JOC)
7. COMMUNICATION CENTER (YRP)
8. ZOECKLER STATION SLQs (YRP)
9. HBCT HQ (ROKFC IN-KIND)
10. MAIN POST CLUB (YRP)
11. ANIMAL BUILDING (ROKFC IN-KIND)

Design Mgmt. Team 6

1. HHOP 1 (PRIVATIZATION)
2. ZOECKLER STATION COMMUNITY SUPPORT (YRP)
3. AIRFIELD OPERATIONS BUILDING (ROKFC IN-KIND)
4. PARKING GARAGE, ZOECKLER STATION (ROKFC)
5. AIRCRAFT MAINT HANGAR w/ APRON (ROKFC IN-KIND)
6. FB&E/LODGE PARKING COMPLEX (ROKFC)
7. CONSOLIDATED INSTALLATION HQ AREA (YRP)
8. GOLF COURSE & FAC. (YRP)
9. EUSA BARRACKS & 2 DFAC (ROKFC)
10. EUSA BARRACKS (YRP)
11. WARE HOUSE AREA (YRP)
12. DOWNTOWN EXCHANGE & COMMISSARY (YRP)
13. TROOP HOUSING & ZS ADN (YRP)
14. DOWN TOWN ADN (ROKFC)
15. WARRIOR SUPPORT ADN (ROKFC)



Criteria Packages (CPs)

- **FED is responsible for completing CPs IAW EMOU**
- **FED manages all aspects of design from inception to CP submittal**
 - **Use SOFA A-Es and in-house Design Branch to prepare CPs**
 - **Ensure appropriate technical expertise in reviewing the CPs: RTC, CXs, MCXs and in-house technical staff**
 - **Coordinate with MURO and incorporate their comments in design**



Criteria Package (CP) Requirements

- **Purpose of CP:**
 - **Develop a concept level design (30% design)**
 - **Give the follow-on designer sufficient information to successfully produce a final (100%) design meeting DoD standard**
- **CP will be developed using the “Guide for Preparation of Criteria Packages for YRP Projects,” which is based on Army Regulation (AR) 420-1**



Criteria Package (CP) Requirements, continued

The CP will include, but is not limited to, the following:

- Description of the project
- Functional requirements
- Plans, drawings, and sketches illustrating requirements
- Design and construction requirements to include criteria, technical and other guidance and specifications
- Site topographic surveys
- Preliminary geotechnical and environmental site investigations
- Special and unique features and requirements
- Budget cost estimate



Final Design from CPs Managed by MURO Supported by LH

- **MURO is responsible for developing the Final Design**
- **FED is responsible for conducting Engineering Surveillance IAW EMOU**
 - **Ensure the designs meet DoD Standards and Criteria**
 - **Coordinate with appropriate technical experts to review plans and specifications: RTC, CX, MCX and in-house Technical Review**
 - **Coordinate and work with MURO**
 - **Coordinate and approve designs submitted by MURO**
 - **Ensure completeness of design**



Design Execution (Post-CP to 100% Design by MURO)

Breakdown by Submittal:

1. *60% Review*
2. *Track comments*
3. *OBR Meeting*
4. *Accept 60% Design*

5. *90% Review*
6. *Track comments*
7. *OBR Meeting*
8. *Accept 90% Design*

9. *100% Review*
10. *Track comments*
11. *OBR Meeting*
12. *Accept 100% Design*



Design Review (1)

Two primary reviewers:

1. Regional Technical Center (RTC) at Honolulu District

- **Reviews shall include all engineering disciplines, including Geotechnical, Architectural, Civil, Structural, Mechanical, Electrical, and Fire Protection.**

2. In-House Technical Review Branch at FED

- **Reviews same disciplines as RTC except Geotechnical and Fire Protection.**



Design Review (2)

Centers of Standardization (COS):

- *Located at various USACE Districts*
- *Develop and maintain standard designs for commonly encountered project types*
- *Provide consistency across USACE designs*
- *Allow more efficient (faster) and more cost-effective designs*
- *Review designs for particular project types*



Design Review (3)

Mandatory Centers of Expertise (MCX):

- *Establish design criteria, review & approve design for special project types*
- *Examples:*
 1. *Army Range and Training Land Program*
 2. *Electronic Security Systems*
 3. *Hazardous, Toxic, & Radioactive Waste (HTRW)*
 4. *Transportation Systems Center (TSMCX)*
 5. *Utility Monitoring & Control System*
 6. *Medical Facilities*
 7. *Protective Design Center*



Design Review (4)

Centers of Expertise (CX):

- *Similar function as MCX but involvement not mandatory*
- *Examples:*
 1. *Aircraft Hangar Fire Protection*
 2. *CADD/GIS Technology Center for Facilities, Infrastructure & Environ.*
 3. *Concrete Technology Center*
 4. *Heating, Ventilating & Air Conditioning (HVAC) Control Systems*
 5. *Hydrologic Engineering Center*
 6. *Institute for Water Resources*
 7. *Interior Design and Space Planning*
 8. *Metallurgy and Welding Engineering Support Center*
 9. *Paint Technology Center*
 10. *Petroleum, Oils and Lubricants*
 11. *Rapid Response HTRW Center*
 12. *Water and Wastewater Treatment*



60% Design Package Requirements

- The purpose of this phase is to develop a 60% level design based on the criteria package including drawings, specifications, calculations, design analyses and cost estimates
- Drawings shall include as a minimum: architectural, civil, structural, mechanical and electrical/communication systems; components for both the basic facility and exterior site development; most current FED basic specification; updated current working estimate (CWE); design calculations & analyses
- There will be a maximum of 21 calendar days to review and return comments



90% Design Package Requirements

- **The purpose of this phase is to develop a 90% level design based on the 60% design including the 60% review comments as jointly approved by the US and ROK DCAs**
- **There will be a maximum of 21 calendar days to review and return comments**
- **90% design is considered as a fully completed design that will require only minor revisions to complete contract documents (100% design) ready to advertise**



100% Design Package Requirements

- **The purpose of this phase is to develop a complete contract package based on the 90% design including the 90% review comments (minor) as jointly approved by the US and ROK DCAs**
- **There will be a maximum of 14 calendar days to review and return comments**
- **The designated representatives from US DCA and ROK DCA who approve the 100% design package by formally signing and stamping the final design must both be US-licensed Professional Engineers (PEs)**



Applicable Regulations and Codes (1)

No.	약 칭	적용 규정 및 법규 명칭	비고
1	ADA-ABA Accessibility Guidelines	Americans with Disabilities Act and Architectural Barriers Act Accessibility Guidelines	건축, 조경 (놀이터)
2	ANSI	American national Standards Institute	건축 (창호)
3	ASHRAE	American Society of Heating, Refrigerating, and Air-Conditioning Engineers	기계 (냉난방), 전기 (에너지 절약)
4	ASTM	American Society for Testing and Materials	건축, 전기
5	ASTM UNIFORMAT II	UNIFORMAT II Elemental classification for Building Specifications, Cost Estimating, and Cost Analysis	설계 내역서 작성 체계
6	CPSC	US Consumer Product Safety Commission	조경 (놀이터)
7	DoDEA	Department of Defense Education Activity	건축, 구조, 토목
8	DoDEA EFS, Elementary School	Department of Defense Education Activity Education Facilities Specifications, Elementary School	건축
9	ER 1110-345-122	Engineer Regulation 1130-345-122, Engineering and Design: Interior Design	건축 (인테리어 CID 패키지)
10	ER 1180-1-6	Engineer Regulation 1180-1-6, Contracts: Construction Quality Management	설계, 시방서 (품질관리 시험)
11	FED Guide Spec	FED Guide Specification	시방서
12	IBC	International Building Code	건축 (승강기), 구조



Applicable Regulations and Codes (2)

No.	약 칭	적용 규정 및 법규 명칭	비고
13	IESNA	Illuminating Engineering Society of North America	전기 (에너지 절약, 옥외 조명)
14	IMC	International Mechanical Code	기계
15	IPEMA	International Play Equipment Manufacturers Association	조경 (놀이터)
16	NEMA	National Electrical Manufacturers Association	전기
17	NFPA	National Fire Protection Association	소방
18	NFPA 72	NFPA Fire Alarm and Signaling Code	소방 (전기소방)
19	NFPA 780	NFPA Standard for the Installation of Lightning Protection Systems	전기 (피뢰설비)
20	MIL-HDBK 419A	Military Handbook 419A Grounding, Bonding and Shielding for Electronic Equipments and Facilities	전기 (피뢰설비)
21	MIL-STD-3007A	Military Standard 3007A Standard Practice for Unified Facilities Criteria and Unified Facilities Guide Specifications	UFC 및 UFGS 표준지침
22	SMACNA	Sheet Metal and Air Conditioning Contractors National Association	기계 (공조)
23	TI 800-01	Technical Instruction 800-01 Design Criteria	전기 (옥외 조명), 전기 (에너지 절약)



Applicable Regulations and Codes (3)

No.	약 칭	적용 규정 및 법규 명칭	비고
24	TM 5-690	Technical Manual 5-690 Grounding and Bonding in Command, Control, Communications, Computer, Intelligence, Surveillance, and Reconnaissance (C4ISR) Facilities	전기, 통신 (접지)
25	UFC 1-300-02	Unified Facilities Criteria 1-300-02, UFGS Format Standard	설계/시방서 (공사 시방서 작성 기준)
26	UFC 3-120-10	Unified Facilities Criteria 3-120-10, Interior Design	건축 (표지판)
27	UFC 3-530-01	Unified Facilities Criteria 3-530-01, Design: Interior and Exterior Lighting and Controls	전기 (조명 제어)
28	UFC 3-550-03FA	Unified Facilities Criteria 3-550-03FA, Electrical Power Supply and Distribution	전기 (옥외 조명, 피뢰 설비)
29	UFC 4-021-01	Unified Facilities Criteria 4-021-01, Design and O&M: Mass Notification System	전기소방 (대량통지)
30	UFC 3-600-01	Unified Facilities Criteria 3-600-01, Fire Protection Engineering for Facilities	전기 (특고압수전 설비), 소방 (전기소방)
31	UFGS	Unified Facilities Guide Specification	시방서
32	UL	Underwriters Laboratories	건축 (창호)
33	USAG Humphreys IDG	US Army Garrison Humphreys Installation Design Guide	부지계획, 건축, 도로 및 보도, 조경, 부대시설물, AT/FP, 에너지 절약, LEED



CP Requirements Matrix

CP REQUIREMENTS MATRIX		
Criteria Items	Non-Site Adapted Projects	Site Adapt Projects
Signature Sheet	♦	♦
DD Form 1391	♦	♦
CRITERIA AND PROJECT TECHNICAL REQUIREMENT SUMMARY		
Reference Documents	♦	♦
General	♦	♦
Civil	♦	♦
Architectural	♦	♦*
Sustainable Design	♦	♦*
Mechanical	♦	♦*
Structural	♦	♦*
Electrical	♦	♦*
Communications	♦	♦*
Fire Protection	♦	♦*
Geotechnical and Environmental	♦	♦*
Antiterrorism/Force Protection	♦	♦*
DRAWINGS		
Title Sheet/Index of Drawings	♦	♦
Legend/Location Plans	♦	♦
Demolition Plan (Civil)	♦	♦
Demolition Plan (MechElec/Comm)	♦	♦
Site Plans	♦	♦
Site Utilities Plan (Civil)	♦	♦
Site Utilities Plan (Mech/Elec/Comm.)	♦	♦
Floor Plans, Main Elevations & Sections	♦	♦
Mechanical Plans and drawings(HVAC, Plumbing)	♦	♦
Interior Special Lighting and Power System Plan	♦	♦
Conceptual Power Single Diagram	♦	♦
Fire Protection Plan	♦	♦

BASIS OF DESIGN		
Civil	♦	♦
Architectural	♦	
Structural	♦	
Mechanical	♦	
Electrical	♦	♦Exterior only
Communication	♦	♦ Exterior only
Fire Protection and Life Safety	♦	♦*
Geotechnical and Environmental (Site Characterization Report)	♦	♦
Antiterrorism/Force Protection	♦	♦
Backup Plans and Data for room sizes	♦	
Site Analysis Sketches	♦	
Functional Summary Sheet	♦	
Mass Block Study	♦	
Bubble Diagram	♦	
Commissioning Plan for Specialized System and Equipment	♦	
Sustainable Design/LEED NC Checklist	♦	♦
SUPPLEMENTAL DOCUMENTS BROCHURE		
USFK Authorization Letter	♦	♦
Charrette Booklet and below items (CD as request of)	♦	♦
Review Comments and Annotations	♦	♦
Project Correspondence	♦	♦
* Describe siting, exterior utilities, supporting facilities and other items not in the standard DDD		



US Army Corps of Engineers




60% Drawing List (3)

CY08 YRP A08Y901,
HIGH SCHOOL
USAG HUMPHREYS, KOREA
고등학교
미육군 험프리지지, 대한민국

SCHEDULE OF DRAWING

SEQ NO.	DWG CODE	SHT NO.	DESCRIPTION OF DRAWING	REVISION STATUS	SEQ NO.	DWG CODE	SHT NO.	DESCRIPTION OF DRAWING	REVISION STATUS
ARCHITECTURAL - CONTINUOUS									
069		AE445	3RD FLOOR DOOR, WINDOW & LOUVER LOCATION PLAN 3층 3층부속 방범도		107		AE602	INTERIOR FINISH SCHEDULE-2 내부 마감 일정표-2	
070		AE446	ROOF LEVEL DOOR, WINDOW & LOUVER LOCATION PLAN(CLASS ROOM AREA) 지붕층 3층부속 방범도(교실상용 방범도)		108		AE603	INTERIOR FINISH SCHEDULE-3 내부 마감 일정표-3	
071		AE461	EXTERIOR WALL SECTION-1 외벽 및 외벽상세도-1		109		AE604	INTERIOR FINISH SCHEDULE-4 내부 마감 일정표-4	
072		AE462	EXTERIOR WALL SECTION-2 외벽 및 외벽상세도-2		110		AE605	INTERIOR FINISH SCHEDULE-5 내부 마감 일정표-5	
073		AE463	EXTERIOR WALL SECTION-3 외벽 및 외벽상세도-3		111		AE606	INTERIOR FINISH SCHEDULE-6 내부 마감 일정표-6	
074		AE464	EXTERIOR WALL SECTION-4 외벽 및 외벽상세도-4		112		AE607	INTERIOR FINISH SCHEDULE-7 내부 마감 일정표-7	
075		AE471	INTERIOR WALL SECTION-1 내벽상세도-1		113		AE608	INTERIOR FINISH SCHEDULE-8 내부 마감 일정표-8	
076		AE472	INTERIOR WALL SECTION-2 내벽상세도-2		114		AE609	EXTERIOR FINISH SCHEDULE, GENERAL NOTES & MATERIAL COLOR SCHEDULE 외부 마감 일정표, 일반사항 및 재료색상표	
077		AE473	INTERIOR WALL SECTION-3 내벽상세도-3		115		AE611	DOOR SCHEDULE-1 문 일정표-1	
078		AE481	STAIR-1 PARTIAL FLOOR PLANS & SECTION 계단상세도 및 단면도		116		AE612	DOOR SCHEDULE-2 문 일정표-2	
079		AE482	STAIR-2 PARTIAL FLOOR PLANS & SECTION 계단상세도 및 단면도		117		AE613	DOOR SCHEDULE-3 문 일정표-3	
080		AE483	STAIR-3 PARTIAL FLOOR PLANS & SECTION 계단상세도 및 단면도		118		AE614	DOOR SCHEDULE-4 문 일정표-4	
081		AE484	STAIR-4 PARTIAL FLOOR PLANS & SECTION 계단상세도 및 단면도		119		AE615	DOOR SCHEDULE-5 문 일정표-5	
082		AE485	ELEVATOR PLAN & SECTION 엘리베이터 평 단면도		120		AE616	DOOR SCHEDULE-6 문 일정표-6	
083		AE491	ENTRANCE PARTIAL PLAN & SECTION-1 출입구 부분 평 단면도-1		121		AE617	DOOR SCHEDULE-7 문 일정표-7	
084		AE492	ENTRANCE PARTIAL PLAN & SECTION-2 출입구 부분 평 단면도-2		122		AE618	DOOR SCHEDULE-8 문 일정표-8	
085		AE493	ENTRANCE PARTIAL FLOOR PLAN-3 출입구 부분 평 단면도-3		123		AE619	DOOR SCHEDULE-9 문 일정표-9	
086		AE494	ENTRANCE PARTIAL FLOOR PLAN-4 출입구 부분 평 단면도-4		124		AE620	DOOR TYPES & ELEVATION 문 상세도	
087		AE495	ENTRANCE PARTIAL PLAN & SECTION-5 출입구 부분 평 단면도-5		125		AE621	WINDOW SCHEDULE 창 상세도	
088		AE501	BUILT-IN FURNITURE DETAILS-1 붙여진 가구상세도-1		126		AE622	WINDOW TYPE & ELEVATION-1 창 상세도-1	
089		AE502	BUILT-IN FURNITURE DETAILS-2 붙여진 가구상세도-2		127		AE623	WINDOW TYPE & ELEVATION-2 창 상세도-2	
090		AE503	OUTDOOR TOILET 1-1 DETAILS (PAVILION) 외부 화장실 1-1 상세도 (파빌리온)		128		AE624	LOUVER SCHEDULE 창틀상세도	
091		AE504	OUTDOOR TOILET 1-2 DETAILS (PAVILION) 외부 화장실 1-2 상세도 (파빌리온)		129		AE625	LOUVER TYPE & ELEVATION 창틀상세도	
092		AE505	OUTDOOR TOILET 2 DETAILS 외부 화장실 2 상세도		130		AE651	INTERIOR WALL SECTION TYPES-1 내벽상세도-1	
093		AE506	CONCRETE STADIUM SEATING DETAILS 콘크리트 스타디움 좌석상세도		131		AE652	INTERIOR WALL SECTION TYPES-2 내벽상세도-2	
094		AE507	CONCRETE STADIUM SEATING FRAMING PLAN 콘크리트 스타디움 좌석 구조상세도		132		AE653	INTERIOR WALL SECTION TYPES-3 내벽상세도-3	
095		AE508	TRASH ENCLOSURE PLAN, ELEVATIONS & SECTION 쓰레기 수거실 평 단면도		133		AE701	INTERIOR ELEVATION-1 내부 단면도-1	
096		AE521	CANOPY DETAILS 지붕상세도		134		AE702	INTERIOR ELEVATION-2 내부 단면도-2	
097		AE531	MISC DETAILS-1 (EIFS) 일반상세도-1 (EIFS)		135		AE703	INTERIOR ELEVATION-3 내부 단면도-3	
098		AE532	MISC DETAILS-2 (EJ) 일반상세도-2 (EJ)		136		AE704	INTERIOR ELEVATION-4 내부 단면도-4	
099		AE533	MISC DETAILS-3 일반상세도-3		137		AE705	INTERIOR ELEVATION-5 내부 단면도-5	
100		AE534	MISC DETAILS-4 일반상세도-4		138		AE706	INTERIOR ELEVATION-6 내부 단면도-6	
101		AE535	MISC DETAILS-5 일반상세도-5		139		AE707	INTERIOR ELEVATION-7 내부 단면도-7	
102		AE536	MISC DETAILS-6 일반상세도-6		140		AE708	INTERIOR ELEVATION-8 내부 단면도-8	
103		AE537	MISC DETAILS-7 일반상세도-7		141		AE709	INTERIOR ELEVATION-9 내부 단면도-9	
104		AE538	MISC DETAILS-8 일반상세도-8		142		AE710	INTERIOR ELEVATION-10 내부 단면도-10	
105		AE539	MISC DETAILS-9 일반상세도-9						
106		AE601	INTERIOR FINISH SCHEDULE-1 내부 마감 일정표-1						

1 TITLE SHEET - 3
SCALE: NONE



DATE	DRAWN	CHECKED	DATE	DESCRIPTION

DATE: 2009. 07. 02
 DRAWN BY: J. H. KIM
 CHECKED BY: J. H. KIM
 PROJECT NO.: 08Y901
 SHEET NO.: 08Y901-3

MHM
 MOODY & HANSON ARCHITECTS
 ARCHITECTS & ENGINEERS CONSULTANTS

CY08 YRP A08Y901 HIGH SCHOOL
 USAG HUMPHREYS, KOREA
 08Y901-3 (EJ)
 TITLE SHEET-3
 3층 내부상세도

SHEET IDENTIFICATION NUMBER
G1003



60% Drawing List (6)

CY08 YRP A08Y901,
HIGH SCHOOL
USAG HUMPHREYS, KOREA
고등학교
미육군 험프리지지, 대한민국

SCHEDULE OF DRAWING

SEQ NO.	DWG CODE	SHT NO.	DESCRIPTION OF DRAWING	REVISION STATUS	SEQ NO.	DWG CODE	SHT NO.	DESCRIPTION OF DRAWING	REVISION STATUS
MECHANICAL - CONTINUOUS									
075		PP409	2nd FLOOR PLUMBING PIPING PARTIAL PLAN-1 2층 위생배관 확대 평면도-1		004		EL102	LIGHTING PLAN-2 2층 조명도-2	
076		PP410	2nd FLOOR PLUMBING PIPING PARTIAL PLAN-2 2층 위생배관 확대 평면도-2		005		EL103	LIGHTING PLAN-3 2층 조명도-3	
077		PP411	2nd FLOOR PLUMBING PIPING PARTIAL PLAN-3 2층 위생배관 확대 평면도-3		006		EL104	LIGHTING PLAN-4 2층 조명도-4	
078		PP412	2nd FLOOR PLUMBING PIPING PARTIAL PLAN-4 2층 위생배관 확대 평면도-4		007		EL105	LIGHTING PLAN-5 2층 조명도-5	
079		PP413	3rd FLOOR PLUMBING PIPING PARTIAL PLAN-1 3층 위생배관 확대 평면도-1		008		EL106	LIGHTING PLAN-6 2층 조명도-6	
080		PP414	3rd FLOOR PLUMBING PIPING PARTIAL PLAN-2 3층 위생배관 확대 평면도-2		009		EL107	LIGHTING PLAN-7 2층 조명도-7	
081		PP415	3rd FLOOR PLUMBING PIPING PARTIAL PLAN-3 3층 위생배관 확대 평면도-3		010		EL108	LIGHTING PLAN-8 2층 조명도-8	
082		PP416	3rd FLOOR PLUMBING PIPING PARTIAL PLAN-4 3층 위생배관 확대 평면도-4		011		EL109	LIGHTING PLAN-9 2층 조명도-9	
083		PP417	MECH. RM. ENLARGED PLUMBING PIPING PLAN FOR #122 MECH. RM. #122 기계실 확대 위생배관 평면도		012		EL110	LIGHTING PLAN-10 2층 조명도-10	
084		PP418	MECH. RM. ENLARGED PLUMBING PIPING PLAN FOR #129 MECH. RM. #129 기계실 확대 위생배관 평면도		013		EL111	LIGHTING PLAN-11 2층 조명도-11	
085		PP601	PLUMBING PIPING SCHEMATIC 위생배관 개통도		014		EL112	LIGHTING PLAN-12 2층 조명도-12	
086		MS401	1ST FLOOR GAS PIPING PLAN 1층 가스배관 평면도		015		EL113	LIGHTING PLAN-13 2층 조명도-13	
087		MS402	2ND FLOOR GAS PIPING PLAN 2층 가스배관 평면도		016		EP101	ELEC. SYSTEM PLAN-1 2층 시공 평면도-1	
088		MS403	3RD FLOOR GAS PIPING PLAN 3층 가스배관 평면도		017		EP102	ELEC. SYSTEM PLAN-2 2층 시공 평면도-2	
089		MI601	MECH. CONTROL LEGEND 자동제어 기호표		018		EP103	ELEC. SYSTEM PLAN-3 2층 시공 평면도-3	
090		MI602	CGMS CONFIGURATION 중앙 관리실 서장		019		EP104	ELEC. SYSTEM PLAN-4 2층 시공 평면도-4	
091		MI603	POINT SCHEDULE INSTRUCTION 자동제어, 관제실 일람표		020		EP105	ELEC. SYSTEM PLAN-5 2층 시공 평면도-5	
092		MI604	AUTOMATIC CONTROL DIAGRAM 1 자동제어 개통도-1		021		EP106	ELEC. SYSTEM PLAN-6 2층 시공 평면도-6	
093		MI605	AUTOMATIC CONTROL DIAGRAM 2 자동제어 개통도-2		022		EP107	ELEC. SYSTEM PLAN-7 2층 시공 평면도-7	
094		MI606	AUTOMATIC CONTROL DIAGRAM 3 자동제어 개통도-3		023		EP108	ELEC. SYSTEM PLAN-8 2층 시공 평면도-8	
095		MI607	AUTOMATIC CONTROL DIAGRAM 4 자동제어 개통도-4		024		EP109	ELEC. SYSTEM PLAN-9 2층 시공 평면도-9	
096		MI608	AUTOMATIC CONTROL DIAGRAM 5 자동제어 개통도-5		025		EP110	ELEC. SYSTEM PLAN-10 2층 시공 평면도-10	
097		MI609	AUTOMATIC CONTROL DIAGRAM 6 자동제어 개통도-6		026		EP111	ELEC. SYSTEM PLAN-11 2층 시공 평면도-11	
098		MI610	AUTOMATIC CONTROL DIAGRAM 7 자동제어 개통도-7		027		EP112	ELEC. SYSTEM PLAN-12 2층 시공 평면도-12	
099		MI611	AUTOMATIC CONTROL DIAGRAM 8 자동제어 개통도-8		028		EP113	ELEC. SYSTEM PLAN-13 2층 시공 평면도-13	
100		MI612	AUTOMATIC CONTROL DIAGRAM 9 자동제어 개통도-9		029		EP401	MECH. ROOM POWER PLAN 기계실 전력 평면도	
101		MI613	AUTOMATIC CONTROL DIAGRAM 10 자동제어 개통도-10		030		EP402	AHU ROOM POWER PLAN-1 환기실 전력도-1	
102		MI614	AUTOMATIC CONTROL DIAGRAM 11 자동제어 개통도-11		031		EP403	AHU ROOM POWER PLAN-2 환기실 전력도-2	
103		MI615	AUTOMATIC CONTROL DIAGRAM 12 자동제어 개통도-12		032		EP601	POWER SINGLE LINE DIAGRAM-1 전력단선 평면도-1	
104		MI616	AUTOMATIC CONTROL DIAGRAM 13 자동제어 개통도-13		033		EP602	POWER SINGLE LINE DIAGRAM-2 전력단선 평면도-2	
105		MI617	AUTOMATIC CONTROL DIAGRAM 14 자동제어 개통도-14		034		ES101	NEW ELEC. DISTRIBUTION PLAN 신설 배선	
106		MI618	AUTOMATIC CONTROL DIAGRAM 15 자동제어 개통도-15		035		ES501	EXTERIOR DETAILS - 1 외부 상세도-1	
107		MI619	AUTOMATIC CONTROL DIAGRAM 16 자동제어 개통도-16		036		ES502	EXTERIOR DETAILS - 2 외부 상세도-2	
					037		ES503	EXTERIOR DETAILS - 3 외부 상세도-3	
ELECTRICAL									
001		E-001	GENERAL NOTES AND LEGEND-1 일반 주의 사항		1 TITLE SHEET - 6 SCALE: NONE				
002		E-002	GENERAL NOTES AND LEGEND-2 일반 주의 사항						
003		EL101	LIGHTING PLAN-1 1층 조명도-1						

<table border="1" style="width: 100%; border-collapse: collapse;"> <tr> <td>REV. NO.</td> <td>DATE</td> <td>DESCRIPTION</td> </tr> <tr> <td> </td> <td> </td> <td> </td> </tr> <tr> <td> </td> <td> </td> <td> </td> </tr> <tr> <td> </td> <td> </td> <td> </td> </tr> </table>	REV. NO.	DATE	DESCRIPTION										<table border="1" style="width: 100%; border-collapse: collapse;"> <tr> <td>DATE: 2009</td> <td>PROJECT NO.: 0809000</td> </tr> <tr> <td>DESIGNER: MOOYOUNG</td> <td>DATE PLOTTED: 08/26/09</td> </tr> <tr> <td>CHECKER: MOOYOUNG</td> <td>SCALE: AS SHOWN</td> </tr> <tr> <td>DATE PLOTTED: 08/26/09</td> <td>PROJECT NAME: USAG HUMPHREYS</td> </tr> <tr> <td>PROJECT NO.: 0809000</td> <td>PROJECT TITLE: HIGH SCHOOL</td> </tr> </table>	DATE: 2009	PROJECT NO.: 0809000	DESIGNER: MOOYOUNG	DATE PLOTTED: 08/26/09	CHECKER: MOOYOUNG	SCALE: AS SHOWN	DATE PLOTTED: 08/26/09	PROJECT NAME: USAG HUMPHREYS	PROJECT NO.: 0809000	PROJECT TITLE: HIGH SCHOOL
REV. NO.	DATE	DESCRIPTION																					
DATE: 2009	PROJECT NO.: 0809000																						
DESIGNER: MOOYOUNG	DATE PLOTTED: 08/26/09																						
CHECKER: MOOYOUNG	SCALE: AS SHOWN																						
DATE PLOTTED: 08/26/09	PROJECT NAME: USAG HUMPHREYS																						
PROJECT NO.: 0809000	PROJECT TITLE: HIGH SCHOOL																						
MHM MOOYOUNG ARCHITECTS ENGINEERS CONSULTANTS 1000 W. WASHINGTON AVE., SUITE 1000 MILWAUKEE, WI 53233-1000 TEL: 414.224.1000 FAX: 414.224.1001 WWW.MHMARCHITECTS.COM																							
CY08 YRP A08Y901, HIGH SCHOOL USAG Humphreys, Korea DRAWING NO.: 0809000-1 PROJECT TITLE: HIGH SCHOOL SHEET NO.: 6 OF 6																							
SHEET IDENTIFICATION NUMBER G1006																							



US Army Corps of Engineers




60% Drawing List (7)

CY08 YRP A08Y901,
HIGH SCHOOL
USAG HUMPHREYS, KOREA
고등학교
미육군 험프리지지, 대한민국

SCHEDULE OF DRAWING

SEQ NO.	DWG CODE	SHT NO.	DESCRIPTION OF DRAWING	REVISION STATUS	SEQ NO.	DWG CODE	SHT NO.	DESCRIPTION OF DRAWING	REVISION STATUS
COMMUNICATION (C41)									
001		T-001	LEGEND, ABBREVIATIONS & NOTE 설치 약어		006		FA106	E/A & MASS NOTIFICATION SYS. PLAN-8 제어 및 방화 시스템 평면도-8	
002		TS-101	COMMUNICATION EXTERIOR PLAN 통신외부평면도		007		FA107	E/A & MASS NOTIFICATION SYS. PLAN-7 제어 및 방화 시스템 평면도-7	
003		TS-102	TELECOM MANHOLE DETAIL 통신인입구상세도		008		FA108	E/A & MASS NOTIFICATION SYS. PLAN-8 제어 및 방화 시스템 평면도-8	
004		TS-103	DUCT DETAIL 덕트상세도		009		FA109	E/A & MASS NOTIFICATION SYS. PLAN-9 제어 및 방화 시스템 평면도-9	
005		IT-101	COMMUNICATION SYSTEM PLAN-1 (1ST FLOOR) 통신평면도-1(1층부평면도)		010		FA110	E/A & MASS NOTIFICATION SYS. PLAN-10 제어 및 방화 시스템 평면도-10	
006		IT-102	COMMUNICATION SYSTEM PLAN-2 (1ST FLOOR) 통신평면도-2(1층부평면도)		011		FA111	E/A & MASS NOTIFICATION SYS. PLAN-11 제어 및 방화 시스템 평면도-11	
007		IT-103	COMMUNICATION SYSTEM PLAN-3 (1ST FLOOR) 통신평면도-3(1층부평면도)		012		FA112	E/A & MASS NOTIFICATION SYS. PLAN-12 제어 및 방화 시스템 평면도-12	
008		IT-104	COMMUNICATION SYSTEM PLAN-4 (1ST FLOOR) 통신평면도-4(1층부평면도)		013		FA113	E/A & MASS NOTIFICATION SYS. PLAN-13 제어 및 방화 시스템 평면도-13	
009		IT-105	COMMUNICATION SYSTEM PLAN-5 (1ST FLOOR) 통신평면도-5(1층부평면도)		014		FA601	ADDRESSABLE FIRE ALARM SYSTEM DIAGRAM-1 주소화재경보시스템도-1	
010		IT-106	COMMUNICATION SYSTEM PLAN-6 (1ST FLOOR) 통신평면도-6(1층부평면도)		015		FA602	ADDRESSABLE FIRE ALARM SYSTEM DIAGRAM-2 주소화재경보시스템도-2	
011		IT-107	COMMUNICATION SYSTEM PLAN-7 (1ST FLOOR) 통신평면도-7(1층부평면도)		016		FA603	MASS NOTIFICATION SYS. SINGLE LINE RISER DIAGRAM -1 집중통보시스템 계층도-1	
012		IT-108	COMMUNICATION SYSTEM PLAN-8 (2ND FLOOR) 통신평면도-8(2층부평면도)		017		FA604	MASS NOTIFICATION SYS. SINGLE LINE RISER DIAGRAM -2 집중통보시스템 계층도-2	
013		IT-109	COMMUNICATION SYSTEM PLAN-9 (2ND FLOOR) 통신평면도-9(2층부평면도)		018		FP001	1st F. FIRE PROTECTION PLAN -1 1층 화재예방계획도-1	
014		IT-110	COMMUNICATION SYSTEM PLAN-10 (2ND FLOOR) 통신평면도-10(2층부평면도)		019		FP002	1st F. FIRE PROTECTION PLAN -2 1층 화재예방계획도-2	
015		IT-111	COMMUNICATION SYSTEM PLAN-11 (3RD FLOOR) 통신평면도-11(3층부평면도)		020		FP003	2nd F. FIRE PROTECTION PLAN 2층 화재예방계획도	
016		IT-112	COMMUNICATION SYSTEM PLAN-12 (3RD FLOOR) 통신평면도-12(3층부평면도)		021		FP004	3rd F. FIRE PROTECTION PLAN 3층 화재예방계획도	
017		IT-113	COMMUNICATION SYSTEM PLAN-13 (3RD FLOOR) 통신평면도-13(3층부평면도)		022		FX101	FIRE PROTECTION PLAN-1 화재예방시스템 평면도-1	
018		IT-114	AV SYSTEM PLAN-MUSIC RM 영상/음향 시스템 평면도		023		FX102	FIRE PROTECTION PLAN-2 화재예방시스템 평면도-2	
019		IT-115	AV SYSTEM PLAN-MULTI PURPOSE RM 영상/음향 시스템 평면도		024		FX103	FIRE PROTECTION PLAN-3 화재예방시스템 평면도-3	
020		IT-116	AV SYSTEM FLOOR PLAN-AUDITORIUM 영상/음향 시스템 평면도-극장		025		FX104	FIRE PROTECTION PLAN-4 화재예방시스템 평면도-4	
021		IT-117	AV SYSTEM CEILING PLAN-AUDITORIUM 영상/음향 시스템 평면도-극장		026		FX105	FIRE PROTECTION PLAN-5 화재예방시스템 평면도-5	
022		IT-118	AV SYSTEM PLAN-INSTRUCTION & STACK 영상/음향 시스템 평면도-강의실		027		FX106	FIRE PROTECTION PLAN-6 화재예방시스템 평면도-6	
023		TY-601	CLOCK SYSTEM SINGLE LINE DIAGRAM 시계방어 계층도		028		FX107	FIRE PROTECTION PLAN-7 화재예방시스템 평면도-7	
024		TY-602	PA SYSTEM SINGLE LINE DIAGRAM 방화방어 계층도		029		FX108	FIRE PROTECTION PLAN-8 화재예방시스템 평면도-8	
025		TY-603	INTERCOM SYSTEM SINGLE LINE DIAGRAM 방화방어 계층도		030		FX109	FIRE PROTECTION PLAN-9 화재예방시스템 평면도-9	
026		TY-604	TV SYSTEM SINGLE LINE DIAGRAM 영상방어 계층도		031		FX110	FIRE PROTECTION PLAN-10 화재예방시스템 평면도-10	
027		TY-605	TEL/LAN SYSTEM SINGLE LINE DIAGRAM 통신방어 계층도		032		FX111	FIRE PROTECTION PLAN-11 화재예방시스템 평면도-11	
028		TY-606	CCV SYSTEM SINGLE LINE DIAGRAM 영상방어 계층도		033		FX112	FIRE PROTECTION PLAN-12 화재예방시스템 평면도-12	
029		TY-607	AV SYSTEM SINGLE LINE DIAGRAM-MULTIPURPOSE RM 영상/음향 시스템 평면도-다목적실		034		FX113	FIRE PROTECTION PLAN-13 화재예방시스템 평면도-13	
030		TY-608	AV SYSTEM SINGLE LINE DIAGRAM-AUDITORIUM 영상/음향 시스템 평면도-극장		035		FX501	FIRE PROTECTION MISC. DETAIL-1 화재예방시스템 상세도-1	
					036		FX502	FIRE PROTECTION MISC. DETAIL-2 화재예방시스템 상세도-2	
					037		FX601	FIRE PROTECTION SYSTEM SINGLE LINE RISER DIAGRAM 화재예방시스템 계층도	
FIRE PROTECTION									
001		FA101	E/A & MASS NOTIFICATION SYS. PLAN-1 제어 및 방화 시스템 평면도-1						
002		FA102	E/A & MASS NOTIFICATION SYS. PLAN-2 제어 및 방화 시스템 평면도-2						
003		FA103	E/A & MASS NOTIFICATION SYS. PLAN-3 제어 및 방화 시스템 평면도-3						
004		FA104	E/A & MASS NOTIFICATION SYS. PLAN-4 제어 및 방화 시스템 평면도-4						
005		FA105	E/A & MASS NOTIFICATION SYS. PLAN-5 제어 및 방화 시스템 평면도-5						

1 **TITLE SHEET - 7**
SCALE: NONE



DATE	DESCRIPTION	DATE	DESCRIPTION

DATE: 2009
DRAWN BY: [blank]
CHECKED BY: [blank]
DESIGNED BY: [blank]
PROJECT NO.: [blank]
SHEET NO.: 7 OF 7

MHM
MOODY & MOODY ARCHITECTS ENGINEERS CONSULTANTS
1000 W. 10TH ST. SUITE 100
DENVER, CO 80202

CY08 YRP A08Y901, HIGH SCHOOL
USAG Humphreys, Korea
1000 W. 10TH ST. SUITE 100
DENVER, CO 80202

SHEET IDENTIFICATION NUMBER
G1007



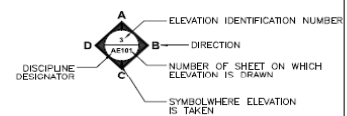
90% Drawing List (1)

FINAL (90%) DRAWINGS
CY08 YRP A08Y901,
HIGH SCHOOL
 고등학교 (90% 설계도서)
USAG HUMPHREYS, KOREA
 미육군 험프리지기, 대한민국

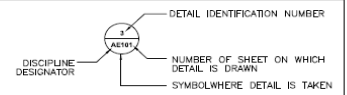
SCHEDULE OF DRAWINGS

RING NO.	SHT ID NO.	DESCRIPTION OF DRAWING	REVISION STATUS	RING NO.	SHT ID NO.	DESCRIPTION OF DRAWING	REVISION STATUS
		GENERAL				CIVIL	
001	GI001	TITLE SHEET-1		001	B-101	BORING LOCATION PLAN	
002	GI002	TITLE SHEET-2		002	B-701	BORING LOGS-1	
003	GI003	TITLE SHEET-3		003	B-702	BORING LOGS-2	
004	GI004	TITLE SHEET-4		004	B-703	BORING LOGS-3	
005	GI005	TITLE SHEET-5		005	B-704	BORING LOGS-4	
006	GI006	TITLE SHEET-6		006	B-705	BORING LOGS-5	
007	GI007	TITLE SHEET-7		007	B-706	BORING LOGS-6	
008	GI008	TITLE SHEET-8		008	B-707	BORING LOGS-7	
009	GI009	TITLE SHEET-9		009	B-708	BORING LOGS-8	
010	GI010	TITLE SHEET-10		010	B-709	BORING LOGS-9	
011	GI011	TITLE SHEET-11		011	C-001	PROJECT LOCATION PLAN	
012	GI012	TITLE SHEET-12		012	C-002	CIVIL ABBREVIATIONS AND LEGENDS	
013	GI013	TITLE SHEET-13		013	C-003	CIVIL GENERAL NOTES	
014	GI014	TITLE SHEET-14		014	C-004	PROJECT CONSTRUCTION BOUNDARY	
015	GI015	TITLE SHEET-15		015	CD101	SITE REMOVAL PLAN	
016	GI016	TITLE SHEET-16		016	CS102	OVERALL SITE LAYOUT PLAN	
017	GI017	TITLE SHEET-17		017	CS103	SITE LAYOUT PLAN - 1	
				018	CS104	SITE LAYOUT PLAN - 2	
				019	CS105	SITE LAYOUT PLAN - 3	
				020	CS106	SITE LAYOUT PLAN - 4	
				021	CG107	OVERALL GRADING AND DRAINAGE PLAN	
				022	CG108	GRADING PLAN - 1	
				023	CG109	GRADING PLAN - 2	
				024	CG110	GRADING PLAN - 3	
				025	CG111	GRADING PLAN - 4	
				026	CG112	DRAINAGE PLAN - 1	
				027	CG113	DRAINAGE PLAN - 2	
				028	CG114	DRAINAGE PLAN - 3	
				029	CG115	DRAINAGE PLAN - 4	
				030	CU116	PERFORATED SUBDRAIN PLAN - 1	
				031	CG116a	PERFORATED SUBDRAIN PLAN - 2	
				032	CG116b	PERFORATED SUBDRAIN PLAN - 3	
				033	CG301	GRADING SECTIONS - 1	
				034	CG301a	GRADING SECTIONS - 1a	
				035	CG301b	GRADING SECTIONS - 1b	
				036	CG302	GRADING SECTIONS - 2	
				037	CG303	GRADING SECTIONS - 3	
				038	CG304	GRADING SECTIONS - 4	
				039	CG305	GRADING SECTIONS - 5	
				040	CG306	GRADING SECTIONS - 6	
				041	CG307	GRADING SECTIONS - 7	

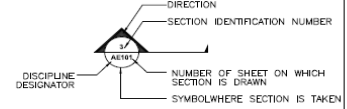
CROSS REFERENCING & DRAWING TITLE CONVENTIONS



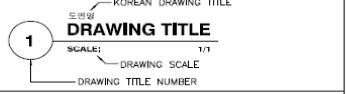
ELEVATION



DETAIL



SECTION



TITLE

GENERAL	G, GX	FIRE PROTECTION	F, FX
CIVIL	C, CX	MECHANICAL	M, MX
LANDSCAPE	L, LX	PLUMBING	P
STRUCTURAL	S, SX	ELECTRICAL	E, EX
ARCHITECTURAL	A, AX	C4I	T, TX
INTERIOR	I		

DISCIPLINE DESIGNATOR

Approved by:	Approved by:
USFX DCA	RGR DCA
Date:	Date:

NO.	REV.	DATE	BY	CHKD	APPV	REASON	DESCRIPTION

USACE DISTRICT OFFICE
 1000 G ST, SW
 WASHINGTON, DC 20540
 TEL: 202/425-1000
 FAX: 202/425-1001
 WWW.USACE.MIL
 MFM CORPORATION
 10000 WOODHOLLOW DRIVE
 HOUSTON, TX 77055
 TEL: 281/291-7000
 FAX: 281/291-7001
 WWW.MFM-CORP.COM

CY08 YRP A08Y901 - HIGH SCHOOL
 USAG Humphreys, Korea
 SHEET NO. 010
 TITLE SHEET - 1
 SHEET 1 OF 1

SHEET IDENTIFICATION NUMBER
 GI001



90% Drawing List (3)

FINAL (90%) DRAWINGS
CY08 YRP A08Y901,
HIGH SCHOOL
 고등학교 (90% 설계도서)
USAG HUMPHREYS, KOREA
 미육군 험프리지, 대한민국

SCHEDULE OF DRAWINGS

RING NO.	SHT ID NO.	DESCRIPTION OF DRAWING	REVISION STATUS	RING NO.	SHT ID NO.	DESCRIPTION OF DRAWING	REVISION STATUS
LANDSCAPE				LANDSCAPE			
001	L-001	SITE LANDSCAPE PLAN 부지경관계획		042	L-041	DISCUS DETAILS 야구공구상세	
002	L-002	TOTAL LIST 총량목록		043	L-042	TRACK DETAILS 경기장상세	
003	L-003	EXTERIOR PAVEMENT PLAN-1 외부포장면도-1		044	L-043	FOOTBALL GOAL DETAIL 축구공구상세	
004	L-004	EXTERIOR PAVEMENT PLAN-2 외부포장면도-2		045	L-044	SOCCER FIELD DETAILS 축구장상세	
005	L-005	EXTERIOR FACILITIES PLAN-1 외부시설면도-1		046	L-045	SHOT PUT DETAILS 철도상세	
006	L-006	EXTERIOR FACILITIES PLAN-2 외부시설면도-2		047	L-046	LONG JUMP AND TRIPLE JUMP DETAILS 장대높이상세	
007	L-007	SODDING AREA MAP 잔디밭면도		048	L-047	TENNIS COURT PLAN 테니스경기장면도	
008	L-008	PLANTING CONCEPTUAL MAP 식재계획면도		049	L-048	TENNIS COURT POST DETAILS 테니스경기장기둥상세	
009	L-009	PLANT LAYOUT PLAN-1 식재배치면도-1		050	L-049	PLANTER DETAILS 식재상세	
010	L-010	PLANT LAYOUT PLAN-2 식재배치면도-2					
011	L-011	PLANT LAYOUT PLAN-3 식재배치면도-3					
012	L-012	PLANT LAYOUT PLAN-4 식재배치면도-4					
013	L-013	PLANTING DETAILS 식재상세					
014	L-014	GREEN ROOF DETAILS-1 녹색지붕상세-1					
015	L-015	GREEN ROOF DETAILS-2 녹색지붕상세-2					
016	L-016	PAVEMENT SECTION DETAILS-1 포장단면상세-1					
017	L-017	PAVEMENT SECTION DETAILS-2 포장단면상세-2					
018	L-018	PAVEMENT SECTION DETAILS-3 포장단면상세-3					
019	L-019	PAVEMENT SECTION DETAILS-4 포장단면상세-4					
020	L-020	PAVEMENT SECTION DETAILS-5 포장단면상세-5					
021	L-021	PAVING PATTERN DETAILS 포장패턴상세					
022	L-022	BATTAN BENCH DETAILS 벤치상세					
023	L-023	FLAT BENCH DETAILS 벤치상세					
024	L-024	DETAILS 상세					
025	L-025	GREEN POLE DETAILS 녹색지주상세					
026	L-026	SITTING WALL DETAILS 앉아있는벽상세					
027	L-027	SOCCER GOALPOST DETAILS 축구공구상세					
028	L-028	KIOSK DETAILS 키오스크상세					
029	L-029	STAND DETAILS 좌석상세					
030	L-030	SAFE HANDRAIL DETAILS 안전수레상세					
031	L-031	DECORATION WALL DETAILS 장식벽상세					
032	L-032	OBELISK, DECORATION POLE DETAILS 기념비, 장식지주상세					
033	L-033	WATERFOUNTAIN DETAILS-1 수분기상세-1					
034	L-034	WATERFOUNTAIN DETAILS-2 수분기상세-2					
035	L-035	BASERAIL FIELD DETAILS 야구장상세					
036	L-036	DUGOUT DETAILS 야구장상세					
037	L-037	BLEACHER DETAILS-1 좌석상세-1					
038	L-0374	BLEACHER DETAILS-2 좌석상세-2					
039	L-038	SOFTBALL FIELD DETAILS 소프트볼경기장상세					
040	L-039	BASKETBALL AND TENNIS COURT DETAILS 농구장, 테니스경기장상세					
041	L-040	BASKETBALL POST, BACKBOARD DETAILS 농구공구, 배드보드상세					

CROSS REFERENCING & DRAWING TITLE CONVENTIONS

ELEVATION

DETAIL

SECTION

도면명
DRAWING TITLE
 SCALE: 1/1
 DRAWING SCALE
 DRAWING TITLE NUMBER

TITLE

GENERAL	G, GX	FIRE PROTECTION	F, FX
CIVIL	C, CX	MECHANICAL	M, MX
LANDSCAPE	L, LX	PLUMBING	P
STRUCTURAL	S, SX	ELECTRICAL	E, EX
ARCHITECTURAL	A, AX	C4I	T, TX
INTERIOR	I		

DISCIPLINE DESIGNATOR

USAG HUMPHREYS
 MFM CORPORATION
 CY08 YRP A08Y901 - HIGH SCHOOL
 USAG Humphreys, Korea
 SHEET IDENTIFICATION NUMBER
 GI003



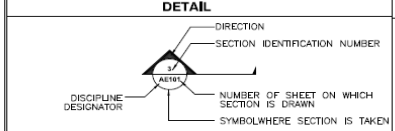
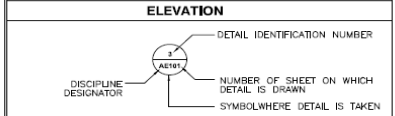
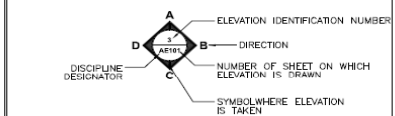
90% Drawing List (5)

FINAL (90%) DRAWINGS
CY08 YRP A08Y901,
HIGH SCHOOL
 고등학교 (90% 설계도서)
USAG HUMPHREYS, KOREA
 미육군 험프리지기, 대한민국

SCHEDULE OF DRAWINGS

RING NO.	SHT ID NO.	DESCRIPTION OF DRAWING	REVISION STATUS	RING NO.	SHT ID NO.	DESCRIPTION OF DRAWING	REVISION STATUS
ARCHITECTURAL							
084	AE470d	EXTERIOR WALL SECTION -14		125	AE502	STAGE DETAILS-2	
085	AE470e	EXTERIOR WALL SECTION -15		126	AE503	STAGE DETAIL-3	
086	AE470f	EXTERIOR WALL SECTION -16		127	AE504	STAGE DETAILS-4	
087	AE470g	EXTERIOR WALL SECTION -17		128	AE504a	PROJECTION ROOM DETAILS	
088	AE470h	EXTERIOR WALL SECTION -18		129	AE505	COURT DETAILS-1	
089	AE470i	EXTERIOR WALL SECTION -19		130	AE506	COURT DETAILS-2	
090	AE470j	EXTERIOR WALL SECTION -20		131	AE507	SPECTATOR SEAT DETAILS	
091	AE470k	EXTERIOR WALL SECTION -21		132	AE508	CHIMNEY DETAILS-1	
092	AE470l	EXTERIOR WALL SECTION -22		133	AE509	CHIMNEY DETAILS-2	
093	AE470m	EXTERIOR WALL SECTION -23		134	AE510	CATWALK DETAILS-1	
094	AE470n	EXTERIOR WALL SECTION -24		135	AE511	CATWALK DETAILS-2	
095	AE470o	EXTERIOR WALL SECTION -25		136	AE512	FRING RANGE TARGET DETAILS	
096	AE470p	EXTERIOR WALL SECTION -26		137	AE512a	CHASE DETAILS	
097	AE471	PARTIAL WALL SECTION -1		138	AE513	STAGE MACHINE ARRANGEMENT & GRID IRON PLAN-1	
098	AE472	PARTIAL WALL SECTION -2		139	AE514	STAGE MACHINE ARRANGEMENT & GRID IRON PLAN-2	
099	AE473	PARTIAL WALL SECTIONS-3		140	AE541	CANOPY DETAILS	
100	AE474	STAIR-1 PARTIAL FLOOR PLANS & SECTION		141	AE551	MISC DETAILS-1(EIFS)	
101	AE475	STAIR-2 PARTIAL FLOOR PLANS & SECTION		142	AE552	MISC DETAILS-2(E.J.)	
102	AE476	STAIR-3 PARTIAL FLOOR PLANS & SECTION		143	AE553	MISC DETAILS-3	
103	AE477	STAIR-4 PARTIAL FLOOR PLANS & SECTION		144	AE554	MISC DETAILS-4	
104	AE478	ELEVATOR PLANS & SECTIONS		145	AE555	MISC DETAILS-5(STAIR)	
105	AE479	PARTIAL SECTION (AUDITORIUM)		146	AE556	MISC DETAILS-6(KNOCK-OUT PANEL)	
106	AE480	PARTIAL SECTION (MULTIPURPOSE)		147	AE557	MISC DETAILS-7	
107	AE481	PARTITION SCHEDULE-1		148	AE558	MISC DETAILS-8	
108	AE482	PARTITION SCHEDULE-2		149	AE559	MISC DETAILS-9	
109	AE483	PARTITION SCHEDULE-3		150	AE560	MISC DETAILS-10	
110	AE484	PARTITION SCHEDULE-4		151	AE561	MISC DETAILS-11	
111	AE485	PARTITION SCHEDULE-5		152	AE562	MISC DETAILS-12	
112	AE486	PARTITION SCHEDULE-6		153	AE563	MISC DETAILS-13	
113	AE487	PARTITION SCHEDULE-7		154	AE564	MISC DETAILS-14	
114	AE488	PARTITION SCHEDULE-8		155	AE565	MISC DETAILS-15	
115	AE489	PARTITION SCHEDULE-9		156	AE566	MISC DETAILS-16(LADDER)	
116	AE490	PARTITION SCHEDULE-10		157	AE567	MISC DETAILS-17	
117	AE491	PARTITION SCHEDULE-11		158	AE568	MISC DETAILS-18	
118	AE492	ENTRANCE PARTIAL PLANS & SECTION-1		159	AE571	EXTERIOR WALL SECTION DETAILS	
119	AE493	ENTRANCE PARTIAL PLANS & SECTION-2		160	AE581	CEILING DETAILS-1	
120	AE494	ENTRANCE PARTIAL PLANS & SECTION-3		161	AE582	CEILING DETAILS-2	
121	AE495	ENTRANCE PARTIAL PLANS & SECTION-4		162	AE591	ROOF DETAILS-1	
122	AE496	ENTRANCE PARTIAL PLANS & SECTION-5		163	AE592	ROOF DETAILS-2	
123	AE497	ENTRANCE PARTIAL PLANS & SECTION-6		164	AE593	ROOF DETAILS-3	
124	AE501	STAGE DETAILS-1		165	AE594	ROOF DETAILS-4	
				166	AE595	ROOF DETAILS-5	

CROSS REFERENCING & DRAWING TITLE CONVENTIONS



TITLE			
GENERAL	G, GX	FIRE PROTECTION	F, FX
CIVIL	C, CX	MECHANICAL	M, MX
LANDSCAPE	L, LX	PLUMBING	P
STRUCTURAL	S, SX	ELECTRICAL	E, EX
ARCHITECTURAL	A, AX	C4I	T, TX
INTERIOR	I		

DISCIPLINE DESIGNATOR

CY08 YRP A08Y901 - HIGH SCHOOL
 USAG Humphreys, Korea
 SHEET IDENTIFICATION NUMBER
GI005



90% Drawing List (7)

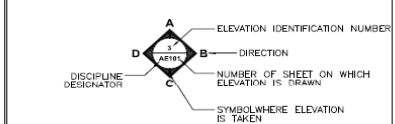
FINAL (90%) DRAWINGS CY08 YRP A08Y901, HIGH SCHOOL

고등학교 (90% 설계도서)
USAG HUMPHREYS, KOREA
미육군 험프리기지, 대한민국

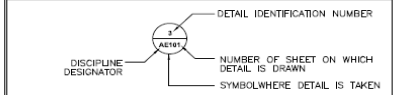
SCHEDULE OF DRAWINGS

RING NO.	SHT ID NO.	DESCRIPTION OF DRAWING	REVISION STATUS	RING NO.	SHT ID NO.	DESCRIPTION OF DRAWING	REVISION STATUS
ARCHITECTURAL							
244	AE723	DOOR SCHEDULE, DOOR, WINDOW/LOUVER TYPE & DETAILS		278	I-416	INTERIOR ELEVATIONS-16	
245	AE724	INT./EXT. FINISH SCHEDULE & WINDOW/LOUVER DETAILS		279	I-417	INTERIOR ELEVATIONS-17	
246	AE725	SIGNAGE SCHEDULE & DETAILS		280	I-418	INTERIOR ELEVATIONS-18	
		CONCRETE STADIUM SEATING & ANNOUNCER'S BOOTH		281	I-419	INTERIOR ELEVATIONS-19	
247	AE726	FLOOR PLAN		282	I-420	INTERIOR ELEVATIONS-20	
248	AE727	ENLARGED PLANS & BUILDING ELEVATIONS		283	I-421	INTERIOR ELEVATIONS-21	
249	AE728	SECTIONS		284	I-422	INTERIOR ELEVATIONS-22	
250	AE729	INT./EXT. FINISH SCHEDULE, DOOR SCHEDULE & DETAILS		285	I-423	INTERIOR ELEVATIONS-23	
251	AE730	MISC. DETAILS		286	I-424	INTERIOR ELEVATIONS-24	
		COVERED WALKWAY		287	I-425	INTERIOR ELEVATIONS-25	
252	AE731	LAYOUT PLAN		288	I-426	INTERIOR ELEVATIONS-26	
253	AE732	1ST FLOOR		289	I-427	INTERIOR ELEVATIONS-27	
254	AE733	ROOF PLANS		290	I-428	INTERIOR ELEVATIONS-28	
255	AE734	SECTIONS & DETAILS-1		291	I-429	INTERIOR ELEVATIONS-29	
256	AE735	SECTIONS & DETAILS-2		292	I-430	INTERIOR ELEVATIONS-30	
257	AE736	TRASH ENCLOSURE & EQUIPMENT SCREEN WALL(TR # 2) PLAN & ELEVATIONS		293	I-431	INTERIOR ELEVATIONS-31	
258	AE736a	TRASH ENCLOSURE PLAN, ELEVATION & SECTION		294	I-432	INTERIOR ELEVATIONS-32	
259	AE737	EQUIPMENT SCREEN WALL PLANS (CHILLER 1,2,3, GEN & TR 1)		295	I-433	INTERIOR ELEVATIONS-33	
260	AE738	EQUIPMENT SCREEN WALL ELEVATIONS		296	I-434	INTERIOR ELEVATIONS-34	
261	AE738a	EQUIPMENT SCREEN WALL SECTIONS, DOOR SCHEDULE & DETAILS		297	I-435	INTERIOR ELEVATIONS-35	
262	AE739	BICYCLE RACK FLOOR PLAN, SECTION & DETAILS		298	I-436	INTERIOR ELEVATIONS-36	
		INTERIOR		299	I-437	INTERIOR ELEVATIONS-37	
263	I-401	INTERIOR ELEVATIONS-1		300	I-438	INTERIOR ELEVATIONS-38	
264	I-402	INTERIOR ELEVATIONS-2		301	I-439	INTERIOR ELEVATIONS-39	
265	I-403	INTERIOR ELEVATIONS-3		302	I-440	INTERIOR ELEVATIONS-40	
266	I-404	INTERIOR ELEVATIONS-4		303	I-441	INTERIOR ELEVATIONS-41	
267	I-405	INTERIOR ELEVATIONS-5		304	I-442	INTERIOR ELEVATIONS-42	
268	I-406	INTERIOR ELEVATIONS-6		305	I-443	INTERIOR ELEVATIONS-43	
269	I-407	INTERIOR ELEVATIONS-7		306	I-444	INTERIOR ELEVATIONS-44	
270	I-408	INTERIOR ELEVATIONS-8		307	I-445	INTERIOR ELEVATIONS-45	
271	I-409	INTERIOR ELEVATIONS-9		308	I-446	INTERIOR ELEVATIONS-46	
272	I-410	INTERIOR ELEVATIONS-10		309	I-447	INTERIOR ELEVATIONS-47	
273	I-411	INTERIOR ELEVATIONS-11		310	I-448	INTERIOR ELEVATIONS-48	
274	I-412	INTERIOR ELEVATIONS-12		311	I-449	INTERIOR ELEVATIONS-49	
275	I-413	INTERIOR ELEVATIONS-13		312	I-450	INTERIOR ELEVATIONS-50	
276	I-414	INTERIOR ELEVATIONS-14		313	I-451	INTERIOR ELEVATIONS-51	
277	I-415	INTERIOR ELEVATIONS-15		314	I-452	INTERIOR ELEVATIONS-52	
				315	I-453	INTERIOR ELEVATIONS-53	
				316	I-454	INTERIOR ELEVATIONS-54(TOILET)	
				317	I-455	INTERIOR ELEVATIONS-55(TOILET)	
				318	I-456	INTERIOR ELEVATIONS-56(TOILET)	
				319	I-457	INTERIOR ELEVATIONS-57(TOILET)	

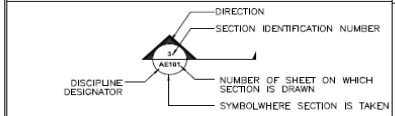
CROSS REFERENCING & DRAWING TITLE CONVENTIONS



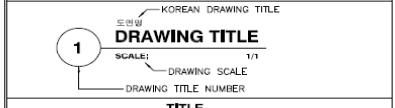
ELEVATION



DETAIL



SECTION



TITLE

GENERAL	G, GX	FIRE PROTECTION	F, FX
CIVIL	C, CX	MECHANICAL	M, MX
LANDSCAPE	L, LX	PLUMBING	P
STRUCTURAL	S, SX	ELECTRICAL	E, EX
ARCHITECTURAL	A, AX	C4I	T, TX
INTERIOR	I		

DISCIPLINE DESIGNATOR



NO.	DATE	BY	CHECK	REVISION

DATE: 08.03.2010
 PROJECT NO.: 08Y901
 DRAWING NO.: 08Y901-07
 SHEET NO.: 7
 TOTAL SHEETS: 17
 DRAWING TITLE: HIGH SCHOOL
 PROJECT LOCATION: USAG HUMPHREYS, KOREA

CY08 YRP A08Y901 - HIGH SCHOOL
 USAG Humphreys, Korea
 SHEET NO. 7 OF 17
 TITLE SHEET - 7
 SHEET IDENTIFICATION NUMBER: GI007



US Army Corps of Engineers



90% Drawing List (8)

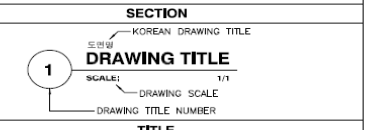
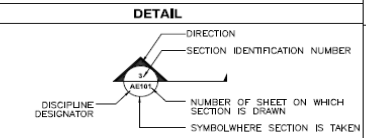
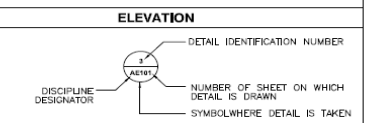
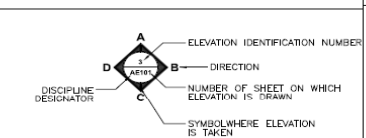
FINAL (90%) DRAWINGS CY08 YRP A08Y901, HIGH SCHOOL

고등학교 (90% 설계도서)
USAG HUMPHREYS, KOREA
미육군 험프리지, 대한민국

SCHEDULE OF DRAWINGS

DRG NO.	SHT ID NO.	DESCRIPTION OF DRAWING	REVISION STATUS	DRG NO.	SHT ID NO.	DESCRIPTION OF DRAWING	REVISION STATUS
ARCHITECTURAL				STRUCTURAL			
320	I-458	INTERIOR ELEVATIONS-58(TOILET)		001	SF001	STRUCTURAL ABBREVIATIONS & LEGEND	
321	I-459	INTERIOR ELEVATIONS-59(TOILET)		002	SF001a	STRUCTURAL GENERAL NOTES & DESIGN DATA	
322	I-460	INTERIOR ELEVATIONS-60(TOILET)		003	SF002	HIGH WIND SUCTION ON METAL ROOF(@ CLASS ROOM)	
323	I-461	INTERIOR ELEVATIONS-61(TOILET)		004	SF002a	HIGH WIND SUCTION ON METAL ROOF(@ COVERED WALKWAY)	
324	I-462	INTERIOR ELEVATIONS-62(TOILET)		005	SF003	TYPICAL CONCRETE DETAILS-1	
325	I-463	INTERIOR ELEVATIONS-63(TOILET)		006	SF004	TYPICAL CONCRETE DETAILS-2	
326	I-464	INTERIOR ELEVATIONS-64(KITCHEN)		007	SF005	TYPICAL CMU DETAILS	
327	I-465	LOBBY PATTERN PLANS-1		008	SF101	OVERALL COLUMN LOCATION PLAN	
328	I-466	LOBBY PATTERN PLANS-2		009	SF102	OVERALL FOUNDATION & 1ST FLOOR FRAMING PLAN	
329	I-471	BUILT-IN FURNITURE SCHEDULE-1		010	SF103	OVERALL 2ND FLOOR & ROOF FRAMING PLAN	
330	I-472	BUILT-IN FURNITURE SCHEDULE-2		011	SF104	OVERALL 3RD FLOOR & ROOF FRAMING PLAN	
331	I-473	BUILT-IN FURNITURE DETI-LS-1		012	SF105	OVERALL LOWER ROOF FRAMING PLAN	
332	I-474	BUILT-IN FURNITURE DETI-LS-2		013	SF106	OVERALL ROOF FRAMING PLAN	
333	I-475	BUILT-IN FURNITURE DETI-LS-3		014	SF121	COLUMN LOCATION PLAN-A	
334	I-476	BUILT-IN FURNITURE DETI-LS-4		015	SF122	COLUMN LOCATION PLAN-B	
335	I-477	BUILT-IN FURNITURE DETI-LS-5		016	SF123	COLUMN LOCATION PLAN-C	
336	I-478	BUILT-IN FURNITURE DETI-LS-6		017	SF124	COLUMN LOCATION PLAN-D	
337	I-479	BUILT-IN FURNITURE DETI-LS-7		018	SF125	COLUMN LOCATION PLAN-E	
338	I-480	BUILT-IN FURNITURE DETI-LS-8		019	SF126	COLUMN LOCATION PLAN-F	
339	I-481	BUILT-IN FURNITURE DETI-LS-9		020	SF127	COLUMN LOCATION PLAN-G	
340	I-481a	BUILT-IN FURNITURE DETI-LS-9A		021	SF128	COLUMN LOCATION PLAN-H	
341	I-482	BUILT-IN FURNITURE DETI-LS-10		022	SF131	FOUNDATION & 1ST FLOOR FRAMING PLAN-A	
342	I-483	BUILT-IN FURNITURE DETI-LS-11		023	SF132	FOUNDATION PLAN-B	
343	I-484	BUILT-IN FURNITURE DETI-LS-12		024	SF133	1ST FLOOR FRAMING PLAN-B	
344	I-484a	BUILT-IN FURNITURE DETI-LS-12A		025	SF134	FOUNDATION & 1ST FLOOR FRAMING PLAN-C	
				026	SF135	FOUNDATION & 1ST FLOOR FRAMING PLAN-D	
				027	SF136	FOUNDATION & 1ST FLOOR FRAMING PLAN-E	
				028	SF137	FOUNDATION & 1ST FLOOR FRAMING PLAN-F	
				029	SF138	FOUNDATION & 1ST FLOOR FRAMING PLAN-G	
				030	SF139	FOUNDATION & 1ST FLOOR FRAMING PLAN-H	
				031	SF141	2ND FLOOR & ROOF FRAMING PLAN-A	
				032	SF142	2ND FLOOR & ROOF FRAMING PLAN-B	
				033	SF143	2ND FLOOR & ROOF FRAMING PLAN-C	
				034	SF144	2ND FLOOR & ROOF FRAMING PLAN-D	
				035	SF145	2ND FLOOR & ROOF FRAMING PLAN-E	
				036	SF146	2ND FLOOR FRAMING PLAN-F	
				037	SF147	2ND FLOOR FRAMING PLAN-G	
				038	SF148	2ND FLOOR & ROOF FRAMING PLAN-H	
				039	SF151	ROOF FRAMING PLAN-A	
				040	SF152	ROOF FRAMING PLAN-B	
				041	SF153	ROOF FRAMING PLAN-C	

CROSS REFERENCING & DRAWING TITLE CONVENTIONS



TITLE			
GENERAL	G, GX	FIRE PROTECTION	F, FX
CIVIL	C, CX	MECHANICAL	M, MX
LANDSCAPE	L, LX	PLUMBING	P
STRUCTURAL	S, SX	ELECTRICAL	E, EX
ARCHITECTURAL	A, AX	C4I	T, TX
INTERIOR	I		

DISCIPLINE DESIGNATOR

NO.	DATE	BY	CHECKED	REVISION

USAG HUMPHREYS, KOREA
 CY08 YRP A08Y901
 HIGH SCHOOL
 TITLE SHEET - F
 SHEET NO. - 18

SHEET IDENTIFICATION NUMBER
G1008



90% Drawing List (12)

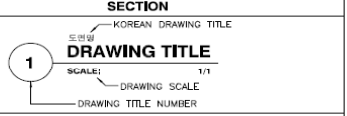
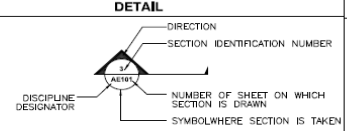
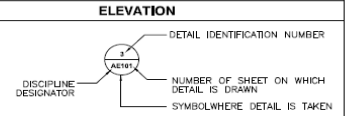
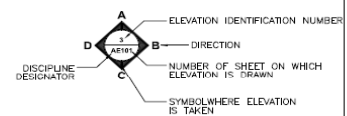
FINAL (90%) DRAWINGS CY08 YRP A08Y901, HIGH SCHOOL

고등학교 (90% 설계도서)
USAG HUMPHREYS, KOREA
미육군 험프리기지, 대한민국

SCHEDULE OF DRAWINGS

RING NO.	SHT ID NO.	DESCRIPTION OF DRAWING	REVISION STATUS	RING NO.	SHT ID NO.	DESCRIPTION OF DRAWING	REVISION STATUS
MECHANICAL							
084	MP109	2nd FLOOR HVAC PIPING PLAN-1		125	PP109	2nd FLOOR PLUMBING PIPING PLAN-1	
085	MP110	2nd FLOOR HVAC PIPING PLAN-2		126	PP110	2nd FLOOR PLUMBING PIPING PLAN-2	
086	MP111	2nd FLOOR HVAC PIPING PLAN-3		127	PP111	2nd FLOOR PLUMBING PIPING PLAN-3	
087	MP112	2nd FLOOR HVAC PIPING PLAN-4		128	PP112	2nd FLOOR PLUMBING PIPING PLAN-4	
088	MP113	3rd FLOOR HVAC PIPING PLAN-1		129	PP113	3rd FLOOR PLUMBING PIPING PLAN-1	
089	MP114	3rd FLOOR HVAC PIPING PLAN-2		130	PP114	3rd FLOOR PLUMBING PIPING PLAN-2	
090	MP115	3rd FLOOR HVAC PIPING PLAN-3		131	PP115	3rd FLOOR PLUMBING PIPING PLAN-3	
091	MP116	3rd FLOOR HVAC PIPING PLAN-4		132	PP116	3rd FLOOR PLUMBING PIPING PLAN-4	
092	MP401	#122MECH. RM. HVAC PIPING PARTIAL PLAN		133	PP401	#122MECH. RM. PLUMBING PIPING PARTIAL PLAN	
093	MP402	#129MECH. RM. HVAC PIPING PARTIAL PLAN		134	PP402	#129MECH. RM. PLUMBING PIPING PARTIAL PLAN	
094	MP403	#C201MECH. RM. HVAC PIPING PARTIAL PLAN		135	PP403	1st TOILET PLUMBING PIPING PARTIAL PLAN-1	
095	MP404	AHUJ. RM. HVAC PIPING PARTIAL PLAN-1		136	PP404	1st TOILET PLUMBING PIPING PARTIAL PLAN-2	
096	MP405	AHUJ. RM. HVAC PIPING PARTIAL PLAN-2		137	PP405	1st TOILET PLUMBING PIPING PARTIAL PLAN-3	
097	MP406	AHUJ. RM. HVAC PIPING PARTIAL PLAN-3		138	PP406	1st TOILET PLUMBING PIPING PARTIAL PLAN-4	
098	MP407	AHUJ. RM. HVAC PIPING PARTIAL PLAN-4		139	PP407	1st TOILET PLUMBING PIPING PARTIAL PLAN-5	
099	MP408	AHUJ. RM. HVAC PIPING PARTIAL PLAN-5		140	PP408	1st TOILET PLUMBING PIPING PARTIAL PLAN-6	
100	MP409	AHUJ. RM. HVAC PIPING PARTIAL PLAN-6		141	PP409	1st TOILET PLUMBING PIPING PARTIAL PLAN-7	
101	MP410	SITE CONCESSION/ANNOUNCER BOOTH HVAC PIPING PARTIAL PLAN		142	PP410	1st TOILET PLUMBING PIPING PARTIAL PLAN-8	
102	MP501	MISC. DETAILS-1		143	PP411	1st TOILET PLUMBING PIPING PARTIAL PLAN-9	
103	MP502	MISC. DETAILS-2		144	PP412	2nd TOILET PLUMBING PIPING PARTIAL PLAN-1	
104	MP503	MISC. DETAILS-3		145	PP413	2nd TOILET PLUMBING PIPING PARTIAL PLAN-2	
105	MP504	MISC. DETAILS-4		146	PP414	3rd TOILET PLUMBING PIPING PARTIAL PLAN-1	
106	MP505	MISC. DETAILS-5		147	PP415	3rd TOILET PLUMBING PIPING PARTIAL PLAN-2	
107	MP506	MISC. DETAILS-6		148	PP416	3rd TOILET PLUMBING PIPING PARTIAL PLAN-3	
108	MP507	MISC. DETAILS-7		149	PP417	1st FLOOR SCIENCE CLASSROOM PLUMBING PIPING PARTIAL PLAN	
109	MP508	MISC. DETAILS-8		150	PP418	2nd FLOOR SCIENCE CLASSROOM PLUMBING PIPING PARTIAL PLAN-1	
110	MP601	HVAC FLOW DIAGRAM		151	PP419	2nd FLOOR SCIENCE CLASSROOM PLUMBING PIPING PARTIAL PLAN-2	
111	MP901	MECH. RM. HVAC PIPING PARTIAL ISO. DIAGRAM-1		152	PP420	2nd FLOOR SCIENCE CLASSROOM PLUMBING PIPING PARTIAL PLAN-3	
112	MP902	MECH. RM. HVAC PIPING PARTIAL ISO. DIAGRAM-2		153	PP421	2nd FLOOR SCIENCE CLASSROOM PLUMBING PIPING PARTIAL PLAN-4	
113	PS101	SITE PIPING PLAN-1		154	PP422	2nd FLOOR SCIENCE CLASSROOM PLUMBING PIPING PARTIAL PLAN-5	
114	PS102	SITE PIPING PLAN-2		155	PP423	3rd FLOOR SCIENCE CLASSROOM PLUMBING PIPING PARTIAL PLAN-1	
115	PS103	SITE PIPING PLAN-3		156	PP424	3rd FLOOR SCIENCE CLASSROOM PLUMBING PIPING PARTIAL PLAN-2	
116	PS104	SITE PIPING PLAN-4		157	PP425	3rd FLOOR SCIENCE CLASSROOM PLUMBING PIPING PARTIAL PLAN-3	
117	PP101	1st FLOOR PLUMBING PIPING PLAN-1		158	PP426	3rd FLOOR SCIENCE CLASSROOM PLUMBING PIPING PARTIAL PLAN-4	
118	PP102	1st FLOOR PLUMBING PIPING PLAN-2		159	PP427	3rd FLOOR SCIENCE CLASSROOM PLUMBING PIPING PARTIAL PLAN-5	
119	PP103	1st FLOOR PLUMBING PIPING PLAN-3		160	PP428	SITE TOILET PLUMBING PIPING PARTIAL PLAN-1	
120	PP104	1st FLOOR PLUMBING PIPING PLAN-4		161	PP429	KITCHEN PLUMBING PIPING PARTIAL PLAN-1	
121	PP105	1st FLOOR PLUMBING PIPING PLAN-5		162	PP430	KITCHEN PLUMBING PIPING PARTIAL PLAN-2	
122	PP106	1st FLOOR PLUMBING PIPING PLAN-6		163	PP431	KITCHEN EQUIPMENT SCHEDULE	
123	PP107	1st FLOOR PLUMBING PIPING PLAN-7		164	PP432	MISC. DETAILS-1	
124	PP108	1st FLOOR PLUMBING PIPING PLAN-8		165	PP501	MISC. DETAILS-2	
				166	PP502	MISC. DETAILS-2	

CROSS REFERENCING & DRAWING TITLE CONVENTIONS



TITLE			
GENERAL	G, GX	FIRE PROTECTION	F, FX
CIVIL	C, CX	MECHANICAL	M, MX
LANDSCAPE	L, LX	PLUMBING	P
STRUCTURAL	S, SX	ELECTRICAL	E, EX
ARCHITECTURAL	A, AX	C4I	T, TX
INTERIOR	I		

DISCIPLINE DESIGNATOR

DATE	DRAWN	CHECKED	DESIGNED	SCALE

DATE	DRAWN	CHECKED	DESIGNED	SCALE

DATE	DRAWN	CHECKED	DESIGNED	SCALE

DATE	DRAWN	CHECKED	DESIGNED	SCALE

DATE	DRAWN	CHECKED	DESIGNED	SCALE

DATE	DRAWN	CHECKED	DESIGNED	SCALE

DATE	DRAWN	CHECKED	DESIGNED	SCALE

DATE	DRAWN	CHECKED	DESIGNED	SCALE

DATE	DRAWN	CHECKED	DESIGNED	SCALE

DATE	DRAWN	CHECKED	DESIGNED	SCALE

DATE	DRAWN	CHECKED	DESIGNED	SCALE

DATE	DRAWN	CHECKED	DESIGNED	SCALE

DATE	DRAWN	CHECKED	DESIGNED	SCALE

DATE	DRAWN	CHECKED	DESIGNED	SCALE

DATE	DRAWN	CHECKED	DESIGNED	SCALE

DATE	DRAWN	CHECKED	DESIGNED	SCALE

DATE	DRAWN	CHECKED	DESIGNED	SCALE

DATE	DRAWN	CHECKED	DESIGNED	SCALE

DATE	DRAWN	CHECKED	DESIGNED	SCALE

DATE	DRAWN	CHECKED	DESIGNED	SCALE

DATE	DRAWN	CHECKED	DESIGNED	SCALE

DATE	DRAWN	CHECKED	DESIGNED	SCALE

DATE	DRAWN	CHECKED	DESIGNED	SCALE

DATE	DRAWN	CHECKED	DESIGNED	SCALE

DATE	DRAWN	CHECKED	DESIGNED	SCALE

DATE	DRAWN	CHECKED	DESIGNED	SCALE

DATE	DRAWN	CHECKED	DESIGNED	SCALE

DATE	DRAWN	CHECKED	DESIGNED	SCALE

DATE	DRAWN	CHECKED	DESIGNED	SCALE

DATE	DRAWN	CHECKED	DESIGNED	SCALE

DATE	DRAWN	CHECKED	DESIGNED	SCALE

DATE	DRAWN	CHECKED	DESIGNED	SCALE

DATE	DRAWN	CHECKED	DESIGNED	SCALE

DATE	DRAWN	CHECKED	DESIGNED	SCALE

DATE	DRAWN	CHECKED	DESIGNED	SCALE

DATE	DRAWN	CHECKED	DESIGNED	SCALE

DATE	DRAWN	CHECKED	DESIGNED	SCALE

DATE	DRAWN	CHECKED	DESIGNED	SCALE

DATE	DRAWN	CHECKED	DESIGNED	SCALE

DATE	DRAWN	CHECKED	DESIGNED	SCALE

DATE	DRAWN	CHECKED	DESIGNED	SCALE

DATE	DRAWN	CHECKED	DESIGNED	SCALE

DATE	DRAWN	CHECKED	DESIGNED	SCALE

DATE	DRAWN	CHECKED	DESIGNED	SCALE

DATE	DRAWN	CHECKED	DESIGNED	SCALE

DATE	DRAWN	CHECKED	DESIGNED	SCALE

DATE	DRAWN	CHECKED	DESIGNED	SCALE

DATE	DRAWN	CHECKED	DESIGNED	
------	-------	---------	----------	--



US Army Corps of Engineers



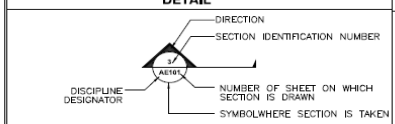
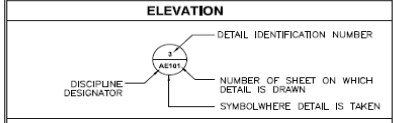
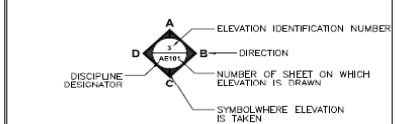
90% Drawing List (13)

FINAL (90%) DRAWINGS
CY08 YRP A08Y901,
HIGH SCHOOL
 고등학교 (90% 설계도서)
USAG HUMPHREYS, KOREA
 미육군 험프리지, 대한민국

SCHEDULE OF DRAWINGS

RING NO.	SHT ID NO.	DESCRIPTION OF DRAWING	REVISION STATUS	RING NO.	SHT ID NO.	DESCRIPTION OF DRAWING	REVISION STATUS
MECHANICAL							
167	PP503	MISC. DETAILS-3		208	M1609	AUTOMATIC CONTROL DIAGRAM-6	
168	PP504	MISC. DETAILS-4		209	M1610	AUTOMATIC CONTROL DIAGRAM-7	
169	PP901	MECH. RM. PLUMBING PIPING PARTIAL ISO. DIAGRAM-1		210	M1611	AUTOMATIC CONTROL DIAGRAM-8	
170	PP902	MECH. RM. PLUMBING PIPING PARTIAL ISO. DIAGRAM-2		211	M1612	AUTOMATIC CONTROL DIAGRAM-9	
171	PP903	1st FLOOR TOILET PLUMBING PIPING PARTIAL ISO. DIAGRAM-1		212	M1613	AUTOMATIC CONTROL DIAGRAM-10	
172	PP904	1st FLOOR TOILET PLUMBING PIPING PARTIAL ISO. DIAGRAM-2		213	M1614	AUTOMATIC CONTROL DIAGRAM-11	
173	PP905	1st FLOOR TOILET PLUMBING PIPING PARTIAL ISO. DIAGRAM-3		214	M1615	AUTOMATIC CONTROL DIAGRAM-12	
174	PP906	1st FLOOR TOILET PLUMBING PIPING PARTIAL ISO. DIAGRAM-4		215	M1616	AUTOMATIC CONTROL DIAGRAM-13	
175	PP907	1st FLOOR TOILET PLUMBING PIPING PARTIAL ISO. DIAGRAM-5		216	M1617	AUTOMATIC CONTROL DIAGRAM-14	
176	PP908	1st FLOOR TOILET PLUMBING PIPING PARTIAL ISO. DIAGRAM-6		217	M1618	AUTOMATIC CONTROL DIAGRAM-15	
177	PP909	1st FLOOR TOILET PLUMBING PIPING PARTIAL ISO. DIAGRAM-7		218	M1619	AUTOMATIC CONTROL DIAGRAM-16	
178	PP910	1st FLOOR TOILET PLUMBING PIPING PARTIAL ISO. DIAGRAM-8		219	M1620	AUTOMATIC CONTROL DIAGRAM-17	
179	PP911	1st FLOOR TOILET PLUMBING PIPING PARTIAL ISO. DIAGRAM-9		220	M1621	AUTOMATIC CONTROL DIAGRAM-18	
180	PP912	1st FLOOR TOILET PLUMBING PIPING PARTIAL ISO. DIAGRAM-10		221	M1622	AUTOMATIC CONTROL DIAGRAM-19	
181	PP913	2nd FLOOR TOILET PLUMBING PIPING PARTIAL ISO. DIAGRAM-1		222	M1623	AUTOMATIC CONTROL DIAGRAM-20	
182	PP914	2nd FLOOR TOILET PLUMBING PIPING PARTIAL ISO. DIAGRAM-2		223	M1624	AUTOMATIC CONTROL DIAGRAM-21	
183	PP915	3rd FLOOR TOILET PLUMBING PIPING PARTIAL ISO. DIAGRAM-1		224	M1625	AUTOMATIC CONTROL DIAGRAM-22	
184	PP916	3rd FLOOR TOILET PLUMBING PIPING PARTIAL ISO. DIAGRAM-2					
185	PP917	1st FLOOR SCIENCE CLASSROOM PLUMBING PIPING PARTIAL ISO. DIAGRAM-1					
186	PP918	2nd FLOOR SCIENCE CLASSROOM PLUMBING PIPING PARTIAL ISO. DIAGRAM-1					
187	PP919	2nd FLOOR SCIENCE CLASSROOM PLUMBING PIPING PARTIAL ISO. DIAGRAM-2					
188	PP920	2nd FLOOR SCIENCE CLASSROOM PLUMBING PIPING PARTIAL ISO. DIAGRAM-3					
189	PP921	2nd FLOOR SCIENCE CLASSROOM PLUMBING PIPING PARTIAL ISO. DIAGRAM-4					
190	PP922	2nd FLOOR SCIENCE CLASSROOM PLUMBING PIPING PARTIAL ISO. DIAGRAM-5					
191	PP923	3rd FLOOR SCIENCE CLASSROOM PLUMBING PIPING PARTIAL ISO. DIAGRAM-1					
192	PP924	3rd FLOOR SCIENCE CLASSROOM PLUMBING PIPING PARTIAL ISO. DIAGRAM-2					
193	PP925	3rd FLOOR SCIENCE CLASSROOM PLUMBING PIPING PARTIAL ISO. DIAGRAM-3					
194	PP926	3rd FLOOR SCIENCE CLASSROOM PLUMBING PIPING PARTIAL ISO. DIAGRAM-4					
195	PP927	3rd FLOOR SCIENCE CLASSROOM PLUMBING PIPING PARTIAL ISO. DIAGRAM-5					
196	PP928	SITE TOILET PLUMBING PIPING PARTIAL ISO. DIAGRAM-1					
197	PP929	SITE TOILET PLUMBING PIPING PARTIAL ISO. DIAGRAM-2					
198	PP930	KITCHEN PLUMBING PIPING PARTIAL ISO. DIAGRAM-1					
199	PP931	KITCHEN PLUMBING PIPING PARTIAL ISO. DIAGRAM-2					
200	M1601	MECH. CONTROL LEGEND					
201	M1602	COMS. CONFIGURATION					
202	M1603	POINT SCHEDULE INSTRUCTION					
203	M1604	AUTOMATIC CONTROL DIAGRAM-1					
204	M1605	AUTOMATIC CONTROL DIAGRAM-2					
205	M1606	AUTOMATIC CONTROL DIAGRAM-3					
206	M1607	AUTOMATIC CONTROL DIAGRAM-4					
207	M1608	AUTOMATIC CONTROL DIAGRAM-5					

CROSS REFERENCING & DRAWING TITLE CONVENTIONS



TITLE			
GENERAL	G, GX	FIRE PROTECTION	F, FX
CIVIL	C, CX	MECHANICAL	M, MX
LANDSCAPE	L, LX	PLUMBING	P
STRUCTURAL	S, SX	ELECTRICAL	E, EX
ARCHITECTURAL	A, AX	C4I	T, TX
INTERIOR	I		

DISCIPLINE DESIGNATOR

SHEET NO. 1013	SHEET TITLE MECHANICAL
DRAWING NO. 1013	DRAWING TITLE MECHANICAL
PROJECT NO. 1013	PROJECT TITLE MECHANICAL
CONTRACT NO. 1013	CONTRACT TITLE MECHANICAL
DRAWING DATE 10/13/08	DRAWING SCALE 1/1
DRAWING BY J. H. H.	DRAWING CHECKED BY J. H. H.
DRAWING APPROVED BY J. H. H.	DRAWING REVISIONS 1. 10/13/08
DRAWING TITLE NUMBER 1013	SHEET IDENTIFICATION NUMBER G1013



US Army Corps of Engineers



90% Drawing List (17)

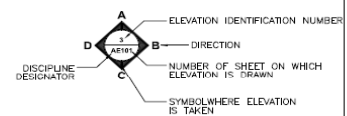
FINAL (90%) DRAWINGS CY08 YRP A08Y901, HIGH SCHOOL

고등학교 (90% 설계도서)
USAG HUMPHREYS, KOREA
미육군 험프리기지, 대한민국

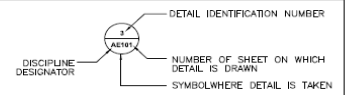
SCHEDULE OF DRAWINGS

RING NO.	SHT ID NO.	DESCRIPTION OF DRAWING	REVISION STATUS	RING NO.	SHT ID NO.	DESCRIPTION OF DRAWING	REVISION STATUS
FIRE PROTECTION							
001	FP001	ABBREVIATION/LEGEND		042	FA110	F/A. & MASS NOTIFICATION SYSTEM PLAN-10 (2nd FL.)	
002	FP002	1ST FL. FIRE PROTECTION PLAN-1		043	FA111	F/A. & MASS NOTIFICATION SYSTEM PLAN-11 (2nd FL.)	
003	FP003	1ST FL. FIRE PROTECTION PLAN-2		044	FA112	F/A. & MASS NOTIFICATION SYSTEM PLAN-12 (2nd FL.)	
004	FP004	2ND FL. FIRE PROTECTION PLAN		045	FA113	F/A. & MASS NOTIFICATION SYSTEM PLAN-13 (3rd FL.)	
005	FP005	3RD FL. FIRE PROTECTION PLAN		046	FA114	F/A. & MASS NOTIFICATION SYSTEM PLAN-14 (3rd FL.)	
006	FX101	FIRE PROTECTION PLAN-1 (1st FL.)		047	FA115	F/A. & MASS NOTIFICATION SYSTEM PLAN-15 (3rd FL.)	
007	FX102	FIRE PROTECTION PLAN-2 (1st FL.)		048	FA116	F/A. & MASS NOTIFICATION SYSTEM PLAN-16 (3rd FL.)	
008	FX103	FIRE PROTECTION PLAN-3 (1st FL.)		049	FA601	F/A. SYSTEM SINGLE LINE RISER DIAGRAM-1	
009	FX104	FIRE PROTECTION PLAN-4 (1st FL.)		050	FA602	F/A. SYSTEM SINGLE LINE RISER DIAGRAM-2	
010	FX105	FIRE PROTECTION PLAN-5 (1st FL.)		051	FA603	F/A. SYSTEM SEQUENCE OF OPERATIONS MATRIX	
011	FX106	FIRE PROTECTION PLAN-6 (1st FL.)		052	FA604	MASS NOTIFICATION SYSTEM SINGLE LINE RISER DIAGRAM-1	
012	FX107	FIRE PROTECTION PLAN-7 (1st FL.)		053	FA605	MASS NOTIFICATION SYSTEM SINGLE LINE RISER DIAGRAM-2	
013	FX108	FIRE PROTECTION PLAN-8 (1st FL.)					
014	FX109	FIRE PROTECTION PLAN-9 (2nd FL.)					
015	FX110	FIRE PROTECTION PLAN-10 (2nd FL.)					
016	FX111	FIRE PROTECTION PLAN-11 (2nd FL.)					
017	FX112	FIRE PROTECTION PLAN-12 (2nd FL.)					
018	FX113	FIRE PROTECTION PLAN-13 (3rd FL.)					
019	FX114	FIRE PROTECTION PLAN-14 (3rd FL.)					
020	FX115	FIRE PROTECTION PLAN-15 (3rd FL.)					
021	FX116	FIRE PROTECTION PLAN-16 (3rd FL.)					
022	FX301	FIRE PROTECTION PIPING SECTION					
023	FX401	MECH. ROOM FIRE PROTECTION PIPING PARTIAL PLAN-1					
024	FX402	MECH. ROOM FIRE PROTECTION PIPING PARTIAL PLAN-2					
025	FX501	FIRE PROTECTION MISC DETAIL-1					
026	FX502	FIRE PROTECTION MISC DETAIL-2					
027	FX601	FIRE PROTECTION SYSTEM SINGLE LINE RISER DIAGRAM					
028	FA001	ABBREVIATION/LEGEND					
029	FA002	1st FL. F/A. & MASS NOTIFICATION SYSTEM PLAN-1					
030	FA003	1st FL. F/A. & MASS NOTIFICATION SYSTEM PLAN-2					
031	FA004	2nd FL. F/A. & MASS NOTIFICATION SYSTEM PLAN					
032	FA005	3rd FL. F/A. & MASS NOTIFICATION SYSTEM PLAN					
033	FA101	F/A. & MASS NOTIFICATION SYSTEM PLAN-1 (1st FL.)					
034	FA102	F/A. & MASS NOTIFICATION SYSTEM PLAN-2 (1st FL.)					
035	FA103	F/A. & MASS NOTIFICATION SYSTEM PLAN-3 (1st FL.)					
036	FA104	F/A. & MASS NOTIFICATION SYSTEM PLAN-4 (1st FL.)					
037	FA105	F/A. & MASS NOTIFICATION SYSTEM PLAN-5 (1st FL.)					
038	FA106	F/A. & MASS NOTIFICATION SYSTEM PLAN-6 (1st FL.)					
039	FA107	F/A. & MASS NOTIFICATION SYSTEM PLAN-7 (1st FL.)					
040	FA108	F/A. & MASS NOTIFICATION SYSTEM PLAN-8 (1st FL.)					
041	FA109	F/A. & MASS NOTIFICATION SYSTEM PLAN-9 (2nd FL.)					

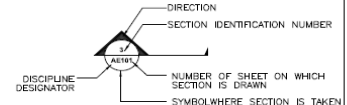
CROSS REFERENCING & DRAWING TITLE CONVENTIONS



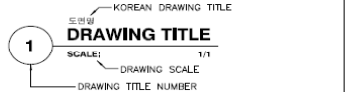
ELEVATION



DETAIL



SECTION



TITLE

GENERAL	G, GX	FIRE PROTECTION	F, FX
CIVIL	C, CX	MECHANICAL	M, MX
LANDSCAPE	L, LX	PLUMBING	P
STRUCTURAL	S, SX	ELECTRICAL	E, EX
ARCHITECTURAL	A, AX	C4I	T, TX
INTERIOR	I		

DISCIPLINE DESIGNATOR



NO.	DATE	BY	CHECKED	REVISION

U.S. ARMY CORPS OF ENGINEERS
 1000 10th Street, Suite 1000
 Fort Belvoir, Colorado 80110
 (303) 271-3000
 FAX (303) 271-3000
 www.usace.army.mil
 U.S. ARMY CORPS OF ENGINEERS
 1000 10th Street, Suite 1000
 Fort Belvoir, Colorado 80110
 (303) 271-3000
 FAX (303) 271-3000
 www.usace.army.mil

CY08 YRP A08Y901 - HIGH SCHOOL
 USAG Humphreys, Korea
 DRAWING NUMBER
TITLE SHEET - 17
 SHEET NO. 17 OF 17

SHEET IDENTIFICATION NUMBER
G1017



QUESTIONS?